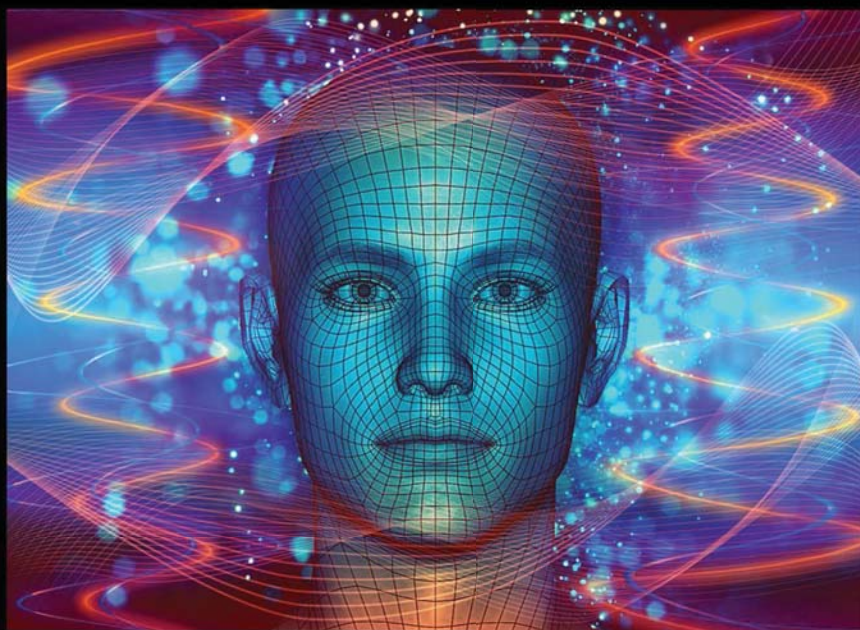


BASIC COURSE OF RADIONICS & 'RADIESTHESIA'



RUGGERO MORETTO

BERSERKER

BOOKS





BASIC COURSE
OF
RADIONICS
AND
“RADIESTHESIA”



(By Ruggero Moretto)

TABLE OF CONTENTS

- RADIESTHESIA	Page 3
- RADIONICS	Page 4
- THE USE OF THE PENDULUM Arrangement to use the pendulum Meeting with the pendulum Our personal code The right formulation of the questions	Page 6
- WORKING TOOLS Definition of Witness	Page 9
- HOW TO CREATE BIO-RESONANCE BETWEEN THE OPERATOR AND THE WITNESS Preliminaries The pendulum as “truffles dog”	Page 11
- PREPARATION FOR THE TEST	Page 13
- THE REAL TEST	Page 15
- IN SUMMARY	Page 17
- RADIONIC THERAPY Test of the 24 Therapeutic Radionic Circuits	Page 18
- LIST OF THE 24 THERAPEUTIC RADIONIC CIRCUITS	Page 20
- ENERGETIC PROPERTIES OF THE 24 ACTIVE RADIONIC CIRCUITS AND THEIR POSOLOGIES	Page 21
- ENERGETIC PROPERTIES OF THE 6 RADIESTHESIC RADIONIC CIRCUITS	Page 29

THE RADIESTHESIA

“Radiesthesia” (*see at the chapter “The Use of Pendulum”*) is a word, which was coined in 1920 by the French abbot Bouly and it comes from the Latin word “Radius” (ray) and from the Greek word “Aisthesis” (*sensation*).

The diviner is the person, who is able to sense, through a pendulum, biotensor or dowsing rod (*stimulation*), the vibrations of impulses and the radiations issued by things, people, animals, grounds, and so on....

In ancient times called Dowsing, it was used just for the search of springs of water or metals as gold. Then the man realized that the radiations are issued, not only by water and metals, but also by each form of life.

Then people realized that this “resonance” between an inorganic substance and the mind of man could be extended to any field. Here the reason for choosing the word “Radiesthesia” as a definition to indicate the study of the waves and vibrations issued by any element.

So Radiesthesia is the study for the search of waves and vibrations issued by any element.

As already said, the main “radiesthetic” working tools, that the “diviner” uses for all kinds of searches, are pendulums made of rock crystal, wood or metal, biotensor, and dowsing rods which are used as help to detect the **vibrations** and **radiations** issued by any element and people.

We will see that Radiesthesia has got a multiplicity of uses.

In fact radiesthetic phenomena have an explanation of physical order: everything, from the living being to the inorganic substance, issues radiations, each one on different wavelengths.

Then the diviner, through his **Divining Faculties** (*that he will develop by radionic radiesthetic graphics and also by some particular techniques as we are going to see in these lecture notes*), is able to sense these wavelengths or natural radiations to find the presence of what he is looking for: illnesses inside a person, the most suitable medicine, therapy or therapeutic approach for the treatment of an illness and for the holistic treatment, water, gold, disappeared things, any diagnosis on grounds, cars, besides to devise active radionics shapes for any vibrational use (*see the chapter on the advanced course of Radionics and Radiesthesia*).

THE RADIONICS

It is the science which studies the radioactive and the energetic properties of the waveforms which are realized and used through graphics circuits on drawn tables.

Starting from the concept now settled in the millenniums that numbers are just one of the many abstract, deep and philosophic expressions that man resorts and resorted to try and to realize his real original nature and everything around him and that consequently geometry is just the physical representation of those mathematical or numerical expressions, we can say that through radionics, which studies the waveforms realized on graphic circuits as for the above-mentioned expressions or formulas elaborated through the experience of all of these sciences, it is possible to draw thought-action and expressions forms through the radiations emitted by them and connected to a particular problem for which we need an answer in a more direct, deep and abstract way, so consequently unknown for us at a rational level.

These forms of energy-thought created in a energetic way through the use of the radiesthetic pendulum and realized then physically on radionic graphic circuits in the form of geometric figures in drawn tables, can be used and channelled through different methods for different purposes.

Now I'm going to explain just one of the uses that this science can offer us at a therapeutic level and to recover our psychophysical and inner health.

We have re-discovered that on the materialized thought-action on each radionic circuit it is possible to realize an energetic and inexhaustible mine of information connected to the thought-form itself where we can draw its radiations also as an helpful action for any kind of problem in question, bringing this way the balance.

Speaking always about the thought-action form, basic principle of radionics, we spontaneously can say that its action could be more suitable as for to the compensation and abstract problems which belong to the mental and spiritual sphere of the person and which could find here the deepest and most suitable answers.

The official contemporary science teaches us nowadays that every existing thing and conceived form (and in this case also the thought-action form), is formed by an energy or radiations in constant movement governed by well definite Cosmic Rules, still unknown for us at a rational level; thousands and thousands of atoms, cells and invisible micro-particles which interact one to another; they create any existing form in the globe and in the space with their own characteristics according to the resultant of received information from each one that in their turn interact with their opposites or similars and so on..... continuously creating then what it is known as Universe.

So we can develop the concept that, as we said before, also the thought-action forms physically created and realized on radionic circuits are part of the same energy which is known as Universal, they can in their turn give their particular information in the form of radiations in accordance with their energetic characteristics of application in an autonomous and continuative way.

As we have previously mentioned, radionics is a very wide science and it includes numberless methods of application for the different uses; in this course we are going to explain the energetic properties of some radionic circuits commonly used and their uses for the treatment of our health in an holistic sense and we will furnish the basic notions of radiesthetic diagnosis to test the most suitable radionic circuits, to know the utilization times and the posology.

THE USE OF THE PENDULUM

This exceptional instrument of search utilizes our personal energy and also the auxiliary energy of the radionic circuits for radiesthetic searches that the operator will use for his work. The pendulum is used as a metal-detector to find, to analyse, to select and to test the most tenuous energies or radiations of any body or thought, by the questions posed by the operator or/and through his **specific intention**; if it is correctly used the pendulum is able to give us reliable answers concerning for the most disparate cases: **everything in the Universe is energy in continuous evolution and in constant movement including our questions and energetic vibratory unconscious intents.**

ARRANGEMENT TO USE THE PENDULUM

After having well washed the hands with cold water, sit comfortably in front of a wood or plastic white writing-desk, keeping there only the objects relevant for your radiesthetic search. You have to sit on the tip of a not metal chair with the erect back without leaning it on the backrest and with open and relaxed shoulders, with the chin a little withdrawn, lightly straining the nape and pushing the summit of the head toward the top and the tongue against the palate. We have to stay in a silent room with soft lights, without disturbing factors and objects of any kind; we have to stay in a general sincere mental and spiritual opening in a most relaxed way (*to get the most reliable answers the posture and the mental predisposition have to be protracted and kept either before than for all the time we are using the pendulum; all that spontaneously leads us to obtain the fundamental state of consciousness either to begin than to bring successfully our work to the end*); as help and a valid preliminary you can even use all mental and breath control practices suitable for you, as yoga, meditation or other things (*if you like you can even charge yourself before and/or during your session keeping yourself in contact with some natural and not worked crystals as a rock crystal, an amethyst or lapis lazuli*); besides, the operator to be more reliable and exact in his searches, as we're going to see later on, can **"broaden"** his sensitiveness before starting his work, using the auxiliary energy emitted by **No. 2, No. 5 and No. 6** radionic circuits for radiesthesia absorbing it simply watching the same circuit in a passive way for 10 minutes.

MEETING WITH THE PENDULUM

Take your personal pendulum by the small chain between the thumb and forefinger of the right hand; put the pendulum far from the quartz the double of its height, letting it fall with its point low in a perpendicular way on the object to test without leaning your elbows on the table; you have to keep the left hand at three fingers under the navel, lightly pressing in this point with the forefinger and the middle finger until you feel a light dull local beat and a light heat at the top of the fingers of the left hand (*keeping a light pressure for all the time in this point, which is the basic place of our personal energy known as "prana", we stimulate our concentration even more and we get more easily our personal energy*); at this point you can start to take contact with your subconscious letting your energy soak the pendulum which begins spontaneously to oscillate on the right and on the left, back and forth, to turn or to pull toward the low (*after few time you could feel a sense of heaviness or a light sense of tickle on the palm of your right hand which could extend to the whole arm*); as you go on, anyway you will feel more and more concentrated and when you are ready after some minutes (*times depend on each person and moment*) you can go on posing the pendulum your first question; while you are using the pendulum don't cross legs or arms and since the beginning don't wear necklaces, rings, watches, bracelets, buckles and any metal things.

OUR PERSONAL CODE

Since the beginning it is very important to fix your personal code to get reliable answers to your questions; for example: if the pendulum pulls toward the low the answer is positive, vice versa if it oscillates from right to left or forth and back the answer is negative.... or if it turns clockwise the answer is positive, vice versa if it turns in an anti-clockwise sense the answer is negative and so on.... You have different opportunities of choice, the pendulum can oscillate in different ways; when you have settled your positive and negative for that pendulum, it is very important to keep always this code you have given it since the beginning; then when you have taken contacts with your inwardness (see the previous page) pose the pendulum the following question: **“SHOW ME THE POSITIVE ANSWER”** (*at this point your pendulum will begin to move slowly showing you the rotation or the oscillation which is your positive answer for any future questions you will pose*) and then: **“SHOW ME THE NEGATIVE ANSWER”**, and then **“SHOW ME THE UNCERTAIN ANSWER”**, and then **“SHOW ME THE NULL ANSWER”** (*note all on a sheet you will keep*). When you test any sentence, the pendulum can even give you an uncertain answer so you'll see it trying to oscillate hardly or it can also not answer beginning to oscillate in a way you haven't considered on your personal code (*in this case pose the question again from another point of view: it is probable that till now there aren't enough parameters to give a firm positive, negative or uncertain answer to your question*).

THE RIGHT FORMULATION OF THE QUESTIONS

Anyway it is necessary to know how to pose the questions to the pendulum; it is possible to pose many questions about all the different subjects; however it is important to respect some basic rules, the answer depends essentially on the formulation of the question and on the clear and concentrated intention of the radiesthesian so you have to respect the following rules:

- pose the question to the pendulum with transparency, simply, in a few words and directly; so don't ask “might this decision be helpful for me?”, but “do I need this decision?”
- never test a sentence with two questions as for instance: “what will be the weather like tomorrow, sunny or cloudy?”
- always pose the questions in a positive way, as for instance “is this decision right?” and not “isn't this decision wrong?”
- never pose questions for which you already know the answer, except only for practising or at the beginning before any session to check your present grade of reliability (*see “PREPARATION FOR THE TEST” at page 13*);
- never pose questions just for curiosity, but with an authentic and SINCERE interest;
- never pose questions which could, intentionally or not, offend or hurt the others;
- never ask “why” but pose the question so that the answer could be “YES” or “NOT”;
- never use the pendulum to get the result of bets, gambles, lottery, and so on...

Then pay attention to the right formulation of the questions, if you don't follow closely these basic rules you won't get reliable answers; for example if various factors are involved, if the question is too complex to get an answer just in one time or if the inmost intention doesn't respect the right use of the pendulum.

So you have to avoid the following questions or formulations:

- questions which come from a negative emotion or intention such as anger, jealousy and so on....;
- questions to get information just for curiosity;
- few clear questions or suitable for different answers;
- questions for which you already know the answer (except for practising or testing your own reliability).

At last, there aren't fixed rules about the subjects for which you can ask questions to the pendulum, everything depends on your real and healthy intentions; to start any radiesthetic test, you can use the "standard" examples from page 13, "PREPARATION FOR THE TEST".

WORKING TOOLS

Let's start now with the working tools:

1. A radiesthetic instrument (or a rock crystal pendulum preferably natural, not pierced and if possible of your own property with a preferably gold small chain) for any kind of test, for instance for the diagnosis needed to test and to put in action the most suitable circuits for the person to treat for a surer and more effective therapy.
2. Two magnets with positive (+) and negative (-) pole to zero the energy of the pendulum between a consultation and the other.
3. A "SUBJECT WITNESS".
4. An "OBJECT WITNESS".
5. The radiesthetic radionic graphics mentioned in this course and explained from page 20 that is: the kit of the 24 active radionic graphic circuits which will be used to channel the renewer energies relative to each person for every object + the 6 radionic graphic circuits for radiesthesia the radiesthetic operator will use to carry out a more serious search.
6. A compass of the cardinal points needed to orient some of the radionic circuits toward the North.

DEFINITION OF WITNESS

By the word "WITNESS" in radiesthesia and in radionics the operator means everything which belongs, remembers or represents in any way the subject or the object on which we work; to get the greater energetic reliability of the witness you need to create or to take a thing which is close to it or which belongs to the SUBJECT or to the OBJECT in an energetic way. The subject witness is the witness of the person, plant, animal for which we are going to carry out any test or consultation, that is any radiesthetic examination carried out by the operator and who takes advantage of the radionic therapy. So the witness is everything that directly or indirectly belongs to him, for instance: nails, hair, hairs, pictures, personal effects or things, and so on....The most reliable witnesses that is those which are most soaked with the energy of the person are the liquid ones as spit, blood, sweat, tears, sperm, secretions, and so on...; these last things can be preserved sealed in a blown glass test tube or soaked in a hanky or in the cotton; anyway, if you don't have these things, you can create the witness in question writing on a white sheet in black ink the Name and Surname, the date, the place and hour of birth with the residence address of the subject and then leave it for a whole day in the middle of the Decagon in a bright room (**No. 1 radiesthetic radionic graphic**).

List of subject witnesses of **physical persons** according to their vibratory reliability:

- Liquid witnesses (*spit, blood, sweat, and so on...*)
- Nails, hair
- Negative or pictures or original pictures
- Sheet with the Name and Surname, date, place, hour of birth with the residence address written on it
- Things which are more frequently in contact with the subject, for instance: hankies, wallets, personal effects

List of subject-witnesses of **animals** according to their vibratory reliability:

- Liquid witnesses (*spit, blood, sweat, and so on...*)
- Nails, hair
- Negative of pictures or original pictures
- Any object which belongs to the animal and which has been in contact with him the most

List of subject-witnesses of **plants** according to their vibratory reliability:

- The sap, a piece of bark or branch, leaf
- Few ground you have picked up near the roots
- Negative of pictures or original pictures of the plant

List of subject-witnesses of any **thought** and mental intention:

- Write the intention, the thought or any resolution on a white sheet in black ink and then leave it for a whole day in the middle of the Decagon in a bright room (**No. 1 radiesthetic radionic graphic**); the form action of this radionic graphic consists of making any witness more reliable in an energetic way.

HOW TO CREATE BIO-RESONANCE BETWEEN THE OPERATOR AND THE WITNESS

Hereunder we are going to describe how to prepare the working tools for the radiesthetic operator and test the most suitable radionic circuits for any subject from the preliminary preparation to the explanation of a “typical” test; this last method can also be used as an example for any radiesthetic search and for any subject witness.

PRELIMINARIES

Before starting any radiesthetic search concerning any subject, we have to prepare the basic working tools in the following order:

1. Get a subject witness of the person, plant or animal in question for which you’re going to carry out any test.
2. Take **No. 1** radionic circuit for radiesthesia (*The Decagon*); put it on a table and put your subject witness in the middle of the figure and let it charge for one day about.
3. Once your subject witness is reliable in a vibratory way thanks to the Decagon, take **No. 2** radionic circuit for radiesthesia (*Resonance Amplifier*), put it on a table and put your picture (*or the picture of the person who carries out the searches by the pendulum*) where it’s showed by the arrow; at the same time put your subject witness in the middle of this graphic if possible under a white rock crystal to further on amplify the resonance; leave everything like this until the end of your search; this radionic graphic will be directly active at a distance on the operator; besides thanks to **No. 2** graphic circuit (*Resonance Amplifier*) the radiesthetic operator will have a particular level of sensitiveness which is essential to bring his work to an end in a precise and reliable way, creating like this a greater BIO-RESONANCE with the present vibration of the subject himself; (**note: the radiesthetic operator to be more reliable in his searches, can widen his sensitiveness using also the auxiliary energy created and emitted by No. 6 radiesthetic radionic circuit (Radiesthetic Sensitiveness Development) soaking it up before carrying out the test, putting a subject witness of the radiesthetic operator himself for 20 minutes about before starting his test by the radiesthetic instruments).**
4. Take **No. 5** radionic circuit for radiesthesia (*Radionic Amplifier*); put it in front of you where you will operate by the pendulum and put in the middle of this graphic another witness of the subject (*or part of the same which has been previously made reliable on the Decagon in a vibrational way*) for which you’re going to carry out the same test; the waveform emitted by this radionic circuit has got the property to amplify any witness placed on its barycentre; at his point let your pendulum fall always on the barycentre of this graphic and on the witness, letting it free to turn in an anti-clockwise sense absorbing its amplified vibration, creating this way a further greater Bio-Resonance between you and the witness; in case you will use **No. 3** and **No. 4** radiesthetic quadrants (*The Cases*) to test a question with different possibilities of answer, put in the middle of each graphic you will use part of the subject witness instead of putting it on the radionic amplifier (**No. 5 radiesthetic radionic graphic**); in this last case to have the Bio-Resonance with the subject witness for which the operator will carry out the relative test, it has to be enough for the operator the only radionic emission issued by **No. 2** radiesthetic graphic (*Resonance Amplifier*), soaking up its vibration only through the pendulum by hereunder explained method.

THE PENDULUM AS “TRUFFLES DOG”

As explained in the chapter “THE USE OF PENDULUM”, where it is explained that the pendulum for moving itself uses our personal energy to work (*besides the energy of the radiesthetic radionic graphics*), now we are going to see that there is also another valid method of test or search specially for all the types of DETAILED SEARCHES, that is THE ABSORPTION by the radiesthetic operator by his rock crystal pendulum (*stone which has got significant amplifying and absorbent proprieties for any kind of energy*) of a wanted or lost (and so on....) sample or object or subject witness, in this case the pendulum acts as a **TRUFFLES DOG**;

Let's see now a typical example:

to SOAK your pendulum, put it in a perpendicular way on a glass of water, (*if for example you want to find water*); at this point the radiesthetic operator will have to use all his energies and psychic resources **ON THE INTENTION OF ABSORBING** the energy of the water; at this point your pendulum will start (*because of the earthly magnetism, if you are above the equator*) to turn in an anti-clockwise sense (*absorbing*) for a short time of few minutes; when the pendulum stops spontaneously this means you have completed the impregnation; at this point when your rock crystal is well full and saturated with the energy of the water, you can start, inside a portion of wished ground, to search the point where you could find the deposit of a natural well; while you are moving yourself little by little inside this room, the pendulum, always thanks to the fact that it is soaked of the energy of the water, will tend (*always according to your movements*) to orient itself MORE instinctively in a clearer, precise and resolute way toward the **SIMILAR** energy spring for which its present energetic state has been SOAKED OR PROGRAMMED (*the same thing is worth for people: to test which are the most suitable remedies, to search physical disorders, and everything concerning him IN THE PRESENT, soak by your pendulum on a picture of him, hair, and so on... or if he is in front of you, you can soak your pendulum of his energy putting it on the top of his head*).

THROUGHOUT THE TIME, FOR ANY UTILIZATION, WHEN HE IS WORKING WITH THE PENDULUM, AS FOR THE SEARCH AND THE SOAKING OF ANY FORM OF ENERGY, THE OPERATOR WILL HAVE TO CONSTANTLY KEEP A SPECTATOR MENTAL ATTITUDE, THE MOST OBJECTIVE AS POSSIBLE, SIMPLY ACCEPTING THE EVIDENCE AND THE SPONTANEOUSNESS OF THE PENDULUM BEHAVIOUR.

THE SECRET FOR BRINGING A GOOD RADIESTHESIC TEST BY THE ROCK CRYSTAL PENDULUM TO THE END, (*as we have seen at the beginning*) CONSISTS OF “SOAKING” AS MUCH AS POSSIBLE YOUR PENDULUM WITH THE ENERGY OR RADIATION OF A SAMPLE OF THE OBJECT FOR WHICH YOU ARE GOING TO CARRY OUT ANY TEST.

PRECAUTIONS:

EVERY TIME YOU HAVE COMPLETED ANY TEST, USE AS A RULE TO **DISCHARGE AND DEPROGRAM** YOUR PENDULUM OF THE ENERGIES OF ANY KIND OF WITNESS OR SAMPLES BY THE MAGNETS.

PREPARATION FOR THE TEST

In a different place and on the table where you carry out your searches by the pendulum, will you prepare some paper and a pen to take note of the answers you get as well as a sheet where you have written in the fixed order all the questions to pose during the consultation.

As previously mentioned, put in front of you on your table where you are going to work by the pendulum the radionic circuits for radiesthesia as you like (**No. 3** or **No. 4** or **No. 5**) according to the kind of approach and test you will carry out; put always in the middle of one of these graphics the subject witness; your pendulum has to fall in a perpendicular way on the barycentre of one of the chosen graphics and on the subject witness, let that the pendulum, oscillating, soaks the energy of the witness itself for few minutes; when your pendulum stops after having circled for some minutes about, you can start posing the first question:

a) IS THIS THE FAVOURABLE MOMENT TO CARRY OUT MY SEARCH?

- In case your answer to question (a) is positive, go on to the point (b) carrying out another small self-examination of self-reliability posing to the pendulum a question of your preference for which you know or you can immediately know the answer to compare it at once with the answer of your pendulum measuring this way your reliability grade;
- In case of negative answer, ask the pendulum the favourable moment to carry out a reliable search; take then **No. 3** radionic circuit for radiesthesia (*the 24 cases*) and pose the following question: **“WHAT IS THE SUITABLE TIME TODAY TO ASK THE PENDULUM?.....”**; at this point your pendulum starts to turn until little by little oscillating it will show you the case corresponding to the number of the suitable time;
- if the pendulum doesn't stop on any answer concerning the previous question, pose it the following question: **“WHAT IS THE SUITABLE TIME TOMORROW TO ASK THE PENDULUM?.....”** and if it is necessary **“THE DAY AFTER TOMORROW”**, and so on.... or: **“WHICH IS THE RIGHT DAY OF THIS MONTH TO ASK THE PENDULUM FOR THIS KIND OF TEST?.....”** (note: to test the days of the month and the minutes make use of No. 4 radiesthetic graphic – The 60 Cases); even in case the pendulum will show you oscillating the most favourable date of this month for doing a reliable consultation; take note of this day and ask then the most suitable time about it: **“WHAT IS THE SUITABLE TIME ON DAY “00/00/0000” TO ASK THE PENDULUM?.....”** and take note of it remembering to carry out your next search in that moment you tested, repeating then the whole procedure from the beginning (a) as a control.

For instance, pose the pendulum the following question:

b) AT WHAT TIME DID I EAT TODAY?..... or..... AT WHAT TIME TODAY.....?

(the pendulum will answer oscillating showing you on your **No. 3** circuit (*the 24 cases*) the number of the case corresponding to the time you have eaten today, and so on.....) ... or....

- IS THE NAME OF MY MOTHER ? (and wait for the answer YES or NOT)
or....

- IS TODAY A SUNNY / RAINY / CLOUDY DAY ?

or

- HOW MANY CENTIGRADE DEGREES ARE THERE IN THIS ROOM? and so on.....

(an information you will check at once by your domestic thermometer for ambients)

Note: it is possible to pose a question to our pendulum for which we know the answer only in this case, for the preliminary self-examination of self-reliability, because our real inwardness is able to distinguish the sincere intention of a self-analysis aimed to a sincere search.

If all these self-examinations carried out till now are positive and logical, you can immediately go on to the next point starting the typical and real test on the subject witness by the radiesthetic circuits.

THE TYPICAL AND REAL TEST

1) In case you are going to test a sentence to get a positive or negative answer:

Take **No. 5** radionic circuit for radiesthesia (*Radionic Amplifier*); put it in front of you where you will work by the pendulum and put in the middle of this graphic another witness of the subject (*or part of it which you have previously made reliable on the Decagon in a vibrational way*) for which you are going to carry out the same test; at this point let your pendulum fall always on the barycentre of this graphic and on the witness, letting it free to turn in an anti-clockwise sense absorbing its amplified vibration, creating this way a further greater Bio-Resonance between you and the witness himself; when the pendulum stops spontaneously, you have completed the Bio-Resonance and so you can start to pose all your questions you have previously written on a sheet of paper, remembering all the notions at the chapter “THE RIGHT FORMULATION OF THE QUESTIONS” at page 7.

Pose for example:

- **IS (name and surname) AT THIS MOMENT IN A PERFECT PHYSICAL HEALTH?**
- **IS (name and surname) AT THIS MOMENT IN STEP WITH HIS/HERSELF?**
- **IS IT HEALTHY FOR (name and surname) TO PRACTISE SWIMMING?**
- **IS THIS THE BEST CHOICE OF WORK FOR (name and surname)?**

..... and so on

2) In case you are going to test a sentence with various possibilities of answering:

Keep at good sight on your left “**a list written by you, where are all the various possible answers to your question which have been numbered maximum from 1 to 24 or from 1 to 60**”, always keeping your pendulum in a perpendicular way in the middle of **No. 3-No. 4** radionic circuits for radiesthesia (*the 24-60 cases*) where you have previously put and absorbed the subject witness in an energetic way... so for instance in case you want to test which is the best natural remedy for any subject, make a list (always numbered) of the remedies you want to test, so you can pose the following question:

- a) WHICH REMEDY OF THIS LIST IS THE MOST SUITABLE FOR.....** (pronounce also name and surname of the subject witness)

At this point the pendulum will start its search circling for a short time in a sense and little by little it will orient itself oscillating toward the case corresponding to the number of the positive answer to your question for your subject witness; then take note on a sheet of the remedy which turned out positive to your test; now pose again the question (a) to check if there is another answer which could be positive always to the same question (*maybe in this case you need more than one remedy*); if your pendulum, in any time of your search, when you have proposed again the question (a), doesn't oscillate on any case or circles in vain, this means you have completed this search; (*take always note on yours sheet little by little of all the positive answers for your subject witness*).

3) In case you are going to test a unit of measurement, or a depth:

Put in front of you and a little above the barycentre of **No. 5** graphic (*Radionic Amplifier*) a ruler of 10 centimetres; put the point of the ruler where is marked 5 centimetres in a perpendicular way in the middle of **No. 5** graphic; so we could say that psychically 1 centimetre equals 1 metre if for instance we want to test the depth where you could find a natural well in a certain ground, so always in the middle of the amplifier we will put the picture of the particular of the ground where for example we have previously tested that we could find a well of water; let your pendulum fall always on the barycentre of this graphic and on the picture-witness, letting it free to turn in an anti-clockwise sense absorbing its amplified vibration, creating this way a further greater Bio-Resonance between you and the ground itself; when the pendulum stops spontaneously, you can start to pose the following question: **“WHICH IS THE DEPTH WHERE I CAN FIND A WELL OF WATER?”**

At this point the pendulum should show you oscillating a digit on the ruler corresponding to the positive answer, for example 7 centimetres; so your well of water will be at 7 metres of depth in the point of the ground where you tested.

This method by the ruler can be used also to test any percentage (*1 centimetre = 10%; 3 centimetres = 30% , and so on...*) for any of your questions, for example to know the percentage of humidity in a room, the percentage of a kind of substance in a body, in a liquid, in any kind of solution, to test a gastronomic recipe, and so on.... so you can dedicate yourself in many ways (*for instance on figures drawn by yourself to let the pendulum show you the right answer*) to test any sentence about any argument and subject.

IN SUMMARY

- You can pose questions on your own initiative and from another point of view more suitable for you, remembering all the parameters previously described at the chapter about “THE RIGHT FORMULATION OF THE QUESTIONS” at page 7 and that the real intentions of the operator are those for which the pendulum answers in a completely reliable way, so you need to know very well what you’re asking to your pendulum.
- Another advice is that you prepare since the beginning all the questions to pose to the pendulum, writing them in a sequence on a sheet of paper where you will make also the answers you got during the test, besides all the radiesthetic radionic circuits as above described.
- Between a test and the other, remember to discharge the pendulum putting it in contact with the magnet.

As above mentioned, it is possible to pose to the pendulum any question about any subject concerning the present, because any form of energy conceived by the radiesthetic operator has a “mental nature”, so it is possible to do tests and diagnoses on:

- Physical problems of any subject
- Any mechanical motor
- For any installation
- To find missing things, persons, animals
- Alimentary intolerances on people, animals
- To test any therapy for any kind of therapeutic approach for people, plants, animals
- Any geopathy inside a house and ground
- The search of wells of water, petroleum, minerals, depth of the subsoil
- Archaeological and historical searches
- How to arrange and orient things and furniture inside houses, offices, to make the room healthy in a vibrational way, and so on...
- To test the healthy colours for painting the walls of houses, offices, and so on...
- To test the most suitable plants for gardens, houses, offices, rooms in general
- To test the best choice about any subject, the talents and the professional and study orientation, the most suitable house, the sports practice, the spiritual discipline
- To test and to plan the best geometric shapes for building a healthy house

..... and finally everything concerning your concrete choices for the “present” in general, always remembering the ethical rules carefully examined in these lecture notes and without developing in the long run a form of dependence if you have previously got small results.

Will the practice of radiesthesia help you in the best way for a more harmonious life.

RADIONIC THERAPY

When you have carried out all the explained preliminaries of the chapter “PREPARATION FOR THE TEST” at page 13, you can immediately go on to the point here below, starting the test of the most suitable radionic circuits for the subject, to realize a more specific radionic treatment:

TEST OF THE 24 THERAPEUTIC RADIONIC CIRCUITS

Keep at good sight on your left “the written and numbered list of the 24 radionic circuits” (page 20) for the radionic treatment always keeping your pendulum in a perpendicular way in the middle of **No. 3** radionic circuit for radesthesia (the 24 cases) where you have previously put and absorbed the subject witness in an energetic way and pose the following question:

- a) **“WHICH IS THE RADIONIC CIRCUIT OF THIS LIST MOST SUITABLE FOR.....?”** (pronounce also name and surname of the subject witness).

At this point the pendulum will start its search circling for a short time in a sense and little by little it will orient oscillating toward the case corresponding to the number of the most suitable radionic circuit for your subject witness that you will use then as a compensation action concerning all his problems; make note then on a sheet of the radionic circuit which has turned out positive to your test; now pose again the answer (a) to check if there is another radionic circuit suitable for optimizing the complete radionic treatment for your subject.

Note: you can't use at the same time for the same subject more than 4 radionic circuits for cycle; if your pendulum, at any time of your search, when you have posed again the question (a) doesn't oscillate on any case or circles in vain, this means you have completed this search; (make note always on your sheet little by little of all the circuits which have turned out particularly active for your subject witness.

When you have tested one or no more than 4 radionic circuits, now you have to know (always by the pendulum with the subject witness placed in the middle of **No. 3** radiesthetic radionic circuit (*the 24 cases*) and of **No. 4** circuit (*the 60 cases*) for each subject the relative times of daily radionic emission in hours and minutes for each circuit which turned out particularly active, besides the number of days, weeks and months to realize a suitable therapeutic cycle; in case of radionic circuits which are used as liquids condensers you have to test the number of water glasses to take every day besides the period in terms of days, weeks, and so on....; then pose the following questions to your pendulum:

Put now in front of you **No. 4** radiesthetic radionic circuit (*the 60 cases*); put the subject witness in the middle of the concentric circles and letting your pendulum fall in a perpendicular way in the middle of the circuit on the subject witness after having absorbed its energy by oscillation, test the following sentence:

- b) **“HOW MANY MINUTES/TIMES PER DAY CAN..... (mention name and surname of the subject witness)..... RECEIVE THE ENERGY BY THE RADIONIC CIRCUIT..... (mention the relative radionic circuit)....?”**

If the pendulum doesn't answer or it stops on the digit 60, put in front of you **No. 3** radiesthetic circuit (*the 24 cases*); put the subject witness in the middle of the concentric circles and letting your pendulum fall in a perpendicular way in the middle of the circuit on the subject witness after having

absorbed its energy by oscillation, test the following sentence:

- c) **“HOW MANY HOURS PER DAY CAN..... (mention name and surname of the subject witness)..... RECEIVE THE ENERGY BY THE RADIONIC CIRCUIT..... (mention the relative radionic circuit)....?”**

Always on **No. 3** radiesthetic circuit (*the 24 cases*), test the following sentence:

- d) **“HOW MANY DAYS/WEEKS/MONTHS CAN..... (mention name and surname of the subject witness)..... RECEIVE THE ENERGY BY THE RADIONIC CIRCUIT..... (mention the relative radionic circuit).... FOR (NO.) MINUTES/HOURS PER DAY?”**

In case you have to test the number of water glasses condensed on some circuits turned out active for the subject, always on **No. 3** radiesthetic circuit (*the 24 cases*), test the following sentence:

- e) **“HOW MANY GLASSES PER DAY CHARGED BY THE RADIONIC CIRCUIT..... (mention the relative radionic circuit)..... CAN (mention name and surname of the subject witness)..... DRINK?”**

..... and then:

- f) **“HOW MANY DAYS/WEEKS/MONTHS CAN..... (mention name and surname of the subject witness)..... DRINK THE WATER (NO. OF GLASSES) CHARGED BY THE RADIONIC CIRCUIT..... (mention the relative radionic circuit)....?”**

- Repeat all this from point (b) for all the others radionic circuits turned out positive for the subject witness previously tested at point (a).
- You can also pose questions on your own initiative and from another point of view more suitable for you, remembering all the parameters previously described at the chapter about “THE RIGHT FORMUALTION OF THE QUESTIONS” at page 6; another advice is that you prepare since the beginning all the questions to pose to the pendulum, writing them in sequence on a sheet of paper here you will also make note of the answers you got during your test, besides all the radiesthetic radionic circuits.
- You have to remember that at the end of their use, all radionic circuits to recover their charge, have to be left inactive for one day about and between a test and the other you have to discharge the pendulum putting it for few seconds in contact with a magnet.
- You have to avoid of showing or diffusing all radionic circuits of your own property because an improper use by other people can seriously damage them (*preserve them carefully far from any indiscretion*); besides you have to avoid of making photostat copies of them because, if they are exposed even for few seconds to a direct light source above 220 Watt, they irremediably lose their energetic charge remaining so unused (*the cold plasticization warrants their longevity for a long time*).

LIST OF THE 24 ACTIVE RADIONIC CIRCUITS

Radionic Circuit No. 1	- Vitamins
Radionic Circuit No. 2	- Yang energy
Radionic Circuit No. 3	- Yin energy
Radionic Circuit No. 4	- Body rebalance
Radionic Circuit No. 5	- Vital magnetism
Radionic Circuit No. 6	- Liver healing
Radionic Circuit No. 7	- Cough and fever
Radionic Circuit No. 8	- Rejuvenation
Radionic Circuit No. 9	- Intestine rebalance
Radionic Circuit No. 10	- Hormonal rebalance
Radionic Circuit No. 11	- Sleep recovery
Radionic Circuit No. 12	- Deep sleep
Radionic Circuit No. 13	- Melatonin
Radionic Circuit No. 14	- Protection
Radionic Circuit No. 15	- Noxious energies elimination
Radionic Circuit No. 16	- Mental healing
Radionic Circuit No. 17	- Anti-depressing
Radionic Circuit No. 18	- Psychosomatic healing
Radionic Circuit No. 19	- Chakras rebalance
Radionic Circuit No. 20	- Consciousness
Radionic Circuit No. 21	- Spirituality
Radionic Circuit No. 22	- Healing magnetism
Radionic Circuit No. 23	- Energetic potentiator
Radionic Circuit No. 24	- Success

FOR WHO IS INTERESTED IN COMPLETING THIS
“HEALING WITH RADIONIC” ON LINE COURSE IT’S
POSSIBLE TO BUY FOR THERAPEUTIC USE “THE KIT
OF THE 30 RADIONIC CIRCUITS ORIGINAL TABLES
AT THE COST OF 210 EURO + FORWARDING CHARGES”
DIRECTLY GETTING IN TOUCH WITH THE AUTHOR OF
THIS COURSE LECTURE NOTES, RUGGERO MORETTO AT
THIS EMAIL ADDRESS: rogermor@tin.it AND BESIDES FOR
ANY QUESTION OR EXPLANATION ON THE TREATED
SUBJECT.

Energetic properties of the 24 active radionic circuits **and their posologies**

RADIONIC CIRCUIT No. 1 – VITAMINS

This radionic circuit has got the property of bringing all the vitaminic forces needed by any subject who is down because of stress, weariness and vital forces exhaustion; to make use of this circuit orient it first to the north by a compass; test first by your pendulum if it's necessary to carry out for our subject in question a kind of distance radionic emission or to take the energetic properties of this radionic circuit by means of some liquids.

Here below a list of the various methods:

- for liquids preparation: put in the center of this radionic circuit a flat bottomed white crystal glass and not goblet without promotional writings and let it charge for some minutes (test by No. 4 graphic –the 60 cases- the numbers of minutes needed for the whole charge); test then the number of daily glasses to take (or the number of drops to take under the tongue, also testing how many times per day and how many days or weeks or months)
- for distance radionic emission: put the subject witness at the center of the graphic and ask the pendulum the daily emission times making use of No. 3 radiesthetic graphic of the 24 cases (to test the number of hours of radionic emission) and No. 4 radiesthetic graphic of the 60 cases (to test the number of minutes of radionic emission); besides you can make use of these two graphics to test also the period of all the emission cycle (days, weeks, months).

Besides, always thanks to No. 3 and no. 4 graphics, it would be suitable to test also the best times of radionic emission, as the best times to take the charged liquids or the drops.

RADIONIC CIRCUIT No. 2 – YANG ENERGY

This graphic mainly suitable for men (but also for women since each one of us has both a male and a female part) lets us to draw to a male auxiliary force (yang) bringing psychophysical well-being; to make use of this radionic circuit orient it to the north by a compass, put the subject witness at the center of the graphic and ask the pendulum the daily emission times making use of No. 3 radiesthetic graphic of the 24 cases (to test the number of hours of radionic emission) and No. 4 radiesthetic graphic of the 60 cases (to test the number of minutes of radionic emission); besides you can make use of these 2 graphics to test also the period of all the emission cycle (days, weeks, months). Besides, always thanks to No. 3 and No. 4 graphics, it would be suitable to test also the best times of radionic emission.

RADIONIC CIRCUIT No. 3 – YIN ENERGY

This graphic mainly suitable for women (but also for men since each one of us has both a male and a female part) lets us to draw to a female auxiliary force (yin) bringing psychophysical well-being; to make use of this radionic circuit orient it to the north by a compass, put the subject witness at the center of the graphic and ask the pendulum the daily emission times making use of No. 3 radiesthetic graphic of the 24 cases (to test the number of hours of radionic emission) and No. 4 radiesthetic graphic of the 60 cases (to test the number of minutes of radionic emission); besides you can make use of these 2 graphics to test also the period of all the emission cycle (days, weeks, months). Besides, always thanks to No. 3 and No. 4 graphics, it would be suitable to test also the best times of radionic emission.

RADIONIC CIRCUIT No. 4 – BODY REBALANCE

This radionic graphic helps all the body to quickly restore every physical energy lost because of weariness, stress, and so on...; this graphic, even if it has healing features similar to the previous radionic circuits, it acts anyway in a completely different way, so it's possible that, for energetic compatibility reasons concerning every person, for the same symptom each one will be able to better absorb the energy of this circuit rather than the one of the previous circuits always for the same indications; to make use of this radionic circuit orient it to the north by a compass, put the subject witness at the center of the graphic and ask the pendulum the daily emission times making use of No. 3 radiesthetic graphic of the 24 cases (to test the number of hours of radionic emission) and No. 4 radiesthetic graphic of the 60 cases (to test the number of minutes of radionic emission); besides you can make use of these 2 graphics to test also the period of all the emission cycle (days, weeks, months). Besides, always thanks to No. 3 and No. 4 graphics, it would be suitable to test also the best times of radionic emission.

RADIONIC CIRCUIT No. 5 – VITAL MAGNETISM

This radionic circuit lets to regenerate your general vital magnetism. Put a subject witness of the person to treat at the center of the figure; to make use of this radionic circuit orient it to the north by a compass, put the subject witness at the center of the graphic and ask the pendulum the daily emission times making use of No. 3 radiesthetic graphic of the 24 cases (to test the number of hours of radionic emission) and No. 4 radiesthetic graphic of the 60 cases (to test the number of minutes of radionic emission); besides you can make use of these 2 graphics to test also the period of all the emission cycle (days, weeks, months). Besides, always thanks to No. 3 and No. 4 graphics, it would be suitable to test also the best times of radionic emission.

RADIONIC CIRCUIT No. 6 – LIVER HEALING

Radionic circuit suitable for all the problems concerning the liver; before making use of this radionic circuit, test by your pendulum if it is necessary to carry out for our subject in question a kind of distance radionic emission or to take the energetic properties of this radionic circuit by means of some liquids.

Here below a list of the various methods:

- for liquids preparation: put in the center of this radionic circuit a flat bottomed white crystal glass and not goblet without promotional writings and let it charge for some minutes (test by No. 4 graphic –the 60 cases- the numbers of minutes needed for the whole charge); test then the number of daily glasses to take (or the number of drops to take under the tongue, also testing how many times per day and how many days or weeks or months)
- for distance radionic emission: put the subject witness at the center of the graphic and ask the pendulum the daily emission times making use of No. 3 radiesthetic graphic of the 24 cases (to test the number of hours of radionic emission) and No. 4 radiesthetic graphic of the 60 cases (to test the number of minutes of radionic emission); besides you can make use of these two graphics to test also the period of all the emission cycle (days, weeks, months). Besides, always thanks to No. 3 and no. 4 graphics, it would be suitable to test also the best times of radionic emission, as the best times to take the charged liquids or the drops.

RADIONIC CIRCUIT No. 7 – COUGH AND FEVER

Radionic circuit complementary to homeopathic and allopathic treatments as for all cases of viral and feverish conditions, colds and cough; before making use of this radionic circuit, test by your pendulum if it is necessary to carry out for our subject in question a kind of distance radionic emission or to take the energetic properties of this radionic circuit by means of some liquids.

Here below a list of the various methods:

- for liquids preparation: put in the center of this radionic circuit a flat bottomed white crystal glass and not goblet without promotional writings and let it charge for some minutes (test by No. 4 graphic –the 60 cases- the numbers of minutes needed for the whole charge); test then the number of daily glasses to take (or the number of drops to take under the tongue, also testing how many times per day and how many days or weeks or months)
- for distance radionic emission: put the subject witness at the center of the graphic and ask the pendulum the daily emission times making use of No. 3 radiesthetic graphic of the 24 cases (to test the number of hours of radionic emission) and No. 4 radiesthetic graphic of the 60 cases (to test the number of minutes of radionic emission); besides you can make use of these two graphics to test also the period of all the emission cycle (days, weeks, months).

Besides, always thanks to No. 3 and no. 4 graphics, it would be suitable to test also the best times of radionic emission, as the best times to take the charged liquids or the drops.

RADIONIC CIRCUIT No. 8 – REJUVENATION

Radionic graphic suitable to develop the rejuvenation and old age slowing down acting this way as a prevention for all illnesses; before making use of this radionic circuit, test by your pendulum if it is necessary to carry out for our subject in question a kind of distance radionic emission or to take the energetic properties of this radionic circuit by means of some liquids.

Here below a list of the various methods:

- for liquids preparation: put in the center of this radionic circuit a flat bottomed white crystal glass and not goblet without promotional writings and let it charge for some minutes (test by No. 4 graphic –the 60 cases- the numbers of minutes needed for the whole charge); test then the number of daily glasses to take (or the number of drops to take under the tongue, also testing how many times per day and how many days or weeks or months)
- for distance radionic emission: put the subject witness at the center of the graphic and ask the pendulum the daily emission times making use of No. 3 radiesthetic graphic of the 24 cases (to test the number of hours of radionic emission) and No. 4 radiesthetic graphic of the 60 cases (to test the number of minutes of radionic emission); besides you can make use of these two graphics to test also the period of all the emission cycle (days, weeks, months). Besides, always thanks to No. 3 and no. 4 graphics, it would be suitable to test also the best times of radionic emission, as the best times to take the charged liquids or the drops.
- Another interesting method to take the energetic properties of this radionic circuit is the one to charge always in the center of the drawing a glass bottle of eau-de-Cologne to use according to your usual habits.

RADIONIC CIRCUIT No. 9 – INTESTINE REBALANCE

This radionic circuit treats all intestinal transit problems for a faeces regular expulsion from the subject; before making use of this radionic circuit, test by your pendulum if it is necessary to carry out for our subject in question a kind of distance radionic emission or to take the energetic properties of this radionic circuit by means of some liquids.

Here below a list of the various methods:

- for liquids preparation: put in the center of this radionic circuit a flat bottomed white crystal glass and not goblet without promotional writings and let it charge for some minutes (test by No. 4 graphic –the 60 cases- the numbers of minutes needed for the whole charge); test then the number of daily glasses to take (or the number of drops to take under the tongue, also testing how many times per day and how many days or weeks or months)
- for distance radionic emission: put the subject witness at the center of the graphic and ask the pendulum the daily emission times making use of No. 3 radiesthesis graphic of the 24 cases (to test the number of hours of radionic emission) and No. 4 radiesthesis graphic of the 60 cases (to test the number of minutes of radionic emission); besides you can make use of these two graphics to test also the period of all the emission cycle (days, weeks, months).

Besides, always thanks to No. 3 and no. 4 graphics, it would be suitable to test also the best times of radionic emission, as the best times to take the charged liquids or the drops.

RADIONIC CIRCUIT No. 10 – HORMONAL REBALANCE

Graphic of medical radionics active for hypophysis and sexual glands (ovaries and testicles) regulating all the hormonal system both for man and woman; before making use of this radionic circuit, test by your pendulum if it is necessary to carry out for our subject in question a kind of distance radionic emission or to take the energetic properties of this radionic circuit by means of some liquids.

Here below a list of the various methods:

- for liquids preparation: put in the center of this radionic circuit a flat bottomed white crystal glass and not goblet without promotional writings and let it charge for some minutes (test by No. 4 graphic –the 60 cases- the numbers of minutes needed for the whole charge); test then the number of daily glasses to take (or the number of drops to take under the tongue, also testing how many times per day and how many days or weeks or months)
- for distance radionic emission: put the subject witness at the center of the graphic and ask the pendulum the daily emission times making use of No. 3 radiesthesis graphic of the 24 cases (to test the number of hours of radionic emission) and No. 4 radiesthesis graphic of the 60 cases (to test the number of minutes of radionic emission); besides you can make use of these two graphics to test also the period of all the emission cycle (days, weeks, months).

Besides, always thanks to No. 3 and no. 4 graphics, it would be suitable to test also the best times of radionic emission, as the best times to take the charged liquids or the drops.

RADIONIC CIRCUIT No. 11 – SLEEP RECOVERY

This radionic circuit doesn't cause neither sleepiness nor weariness, it just helps to recover the hours of sleep previously lost maybe because of time zone change or simply to adjust the natural biorhythms lost in the past for other reasons; the radionic action of this radionic graphic activates when we fall asleep; to make use of this radionic circuit orient it to the north by a compass, put the subject witness at the center of the graphic before going to bed and keep it active till the awakening (ask the pendulum the number of nights you need to make use of this graphic and which you need to wholly restore your sleep-watch biological cycle, making use of No. 4 radiesthetic graphic of the 60 cases). Besides, always thanks to No. 3 and No. 4 graphics, it would be suitable to test also the best times of radionic emission.

RADIONIC CIRCUIT No. 12 – DEEP SLEEP

Also this radionic circuit which helps to sleep in a correct way, doesn't cause neither sleepiness nor weariness; unlike No. 11 circuit, it helps us to learn how to come little by little in the long run to a deep and refreshing sleep helping who suffers from sleeplessness to face a quiet night; this circuit which is active when the subject falls asleep, is to be placed in the same room where the subject himself will spend the night (or at least within 12 meters otherwise its influence will be reduced), putting before going to bed one's own subject witness at the center of the biggest concentric circles upon the 9 numbers, remembering to take it off at the awakening; (always ask the pendulum for the number of the needed emission days for each subject); anyway it is advisable not to abuse of this circuit and make use of it just in case of real need. Besides, always thanks to No. 3 and No. 4 graphics it would be suitable to test also the best times of radionic emission.

RADIONIC CIRCUIT No. 13 – MELATONINE

This radionic circuit helps the stimulation of the pineal gland to produce the right quantity of melatonin we need for a perfect bio-energetic balance; before making use of this radionic circuit, test by your pendulum if it is necessary to carry out for our subject in question a kind of distance radionic emission or to take the energetic properties of this radionic circuit by means of some liquids.

Here below a list of the various methods:

- for liquids preparation: put in the center of this radionic circuit a flat bottomed white crystal glass and not goblet without promotional writings and let it charge for some minutes (test by No. 4 graphic –the 60 cases- the numbers of minutes needed for the whole charge); test then the number of daily glasses to take (or the number of drops to take under the tongue, also testing how many times per day and how many days or weeks or months)
- for distance radionic emission: put the subject witness at the center of the graphic and ask the pendulum the daily emission times making use of No. 3 radiesthetic graphic of the 24 cases (to test the number of hours of radionic emission) and No. 4 radiesthetic graphic of the 60 cases (to test the number of minutes of radionic emission); besides you can make use of these two graphics to test also the period of all the emission cycle (days, weeks, months). Besides, always thanks to No. 3 and no. 4 graphics, it would be suitable to test also the best times of radionic emission, as the best times to take the charged liquids or the drops.

RADIONIC CIRCUIT No. 14 – PROTECTION

This suitable circuit is used to protect from all kind of undesired external psychic attacks, from voluntary and involuntary manipulation of your subconscious caused by other people through any energetic, vibrational and mental, suggestion method and so on.....; it's suitable for all dependences of psycho-emotional nature on other people; besides this radionic circuit protects from all the energy forms noxious for us, as mobile phones vibrations, any kind of noxious radiations, even from dust, pollens intolerances and so on...; to make use of this radionic circuit orient it to the north by a compass, put the subject witness at the center of the graphic and ask the pendulum the daily emission times making use of No. 3 radiesthetic graphic of the 24 cases (to test the number of hours of radionic emission) and No. 4 radiesthetic graphic of the 60 cases (to test the number of minutes of radionic emission); besides you can make use of these 2 graphics to test also the period of all the emission cycle (days, weeks, months). Besides, always thanks to No. 3 and No. 4 graphics, it would be suitable to test also the best times of radionic emission.

RADIONIC CIRCUIT No. 15 – NOXIOUS ENERGIES ELIMINATION

This suitable circuit lets us to get rid in a permanent and precise way of all the noxious energies accumulated so far through the different methods, from evident or hidden external psychic attacks wanted or involuntary caused by other people, from natural and of telluric origins radiations, to negative thoughts created by the subject due to the above-mentioned reasons, and so on.....; this circuit is not to be mistaken with No. 14 one where the protection action is preventive; to make use of this radionic circuit orient it to the north by a compass, put the subject witness at the center of the graphic and ask the pendulum the daily emission times making use of No. 3 radiesthetic graphic of the 24 cases (to test the number of hours of radionic emission) and No. 4 radiesthetic graphic of the 60 cases (to test the number of minutes of radionic emission); besides you can make use of these 2 graphics to test also the period of all the emission cycle (days, weeks, months). Besides, always thanks to No. 3 and No. 4 graphics, it would be suitable to test also the best times of radionic emission.

RADIONIC CIRCUIT No. 16 – MENTAL HEALING

This very suitable graphic acts at a mental level, channelling from one to five positive mental qualities (which are inside the circuit and are written inside the 19 cases so that they show themselves in the form of object witnesses) where the subject lacks. This circuit allows us to correct on the subject a series of noxious mental habits which had been created in the long run because of the lack of the above-mentioned fundamental positive qualities which have spoiled his innate harmonious existence for a long time; briefly these channelled positive mental qualities act directly on the actual “cause” of each lack rebalancing it, so that little by little they bring to the subject harmony, clearness and balance to all those visible and undesired effects which the subject erroneously considers the real cause of every lack of balance; let's see now how to predispose the use of this radionic circuit; put it in front of you and put in the middle of the figure, the witness of the subject to treat; now let your pendulum fall in a perpendicular way on the subject witness and let it soak oscillating of its energy for some minutes; at this point, you need to know the most suitable qualities for your subject witness so that you can then put them in function on the circuit; now pose your pendulum the following question: “WHICH IS THE FIRST MOST SUITABLE QUALITY FOR?” (mention name and surname of the subject witness); little by little your pendulum will start to circle until it will show you oscillating the case containing the first missing positive quality for the subject witness; make note of it on a sheet of paper you will keep close to you; you can now

go on with the second question: “WHICH IS THE SECOND MOST SUITABLE QUALITY FOR?” (mention name and surname of the subject witness); and so on..... (at last you have to test no more than 5 qualities for each session); if at any time of your work the pendulum circles in vain without showing nothing else, this means that all the qualities you have tested till now will be the only to be put in function on the graphic; when you have made note of all the qualities to use for the session (no more than four), let's see now how to put them in action on this circuit: for instance: we have tested for our subject witness three qualities as: “calm”, “courage” and “goodwill”; to activate on the circuit the first tested quality of the subject witness, we have to let our pendulum fall in a perpendicular way on the writing “telekinesis” letting it circle on the writing itself so that it can absorb its energy for five seconds about; after that, while the pendulum keeps on circling, take it by your arm little by little in a tangential way in the middle of the figure where is placed the subject witness and let that it keeps on circling always on the writing and on the subject witness itself till it stops spontaneously; do the same thing also for the other previously tested qualities which turned out positive for your subject witness; when you have precisely completed all the previous operations, the graphic is completely active; leave everything like this for one hour about including the subject witness which is in the middle of the graphic; from the end of the first session, you can put this graphic in function again for the same subject after a certain time about (always ask your pendulum by **No. 3** radionic circuit for radiesthesia (the 24 cases) for each subject witness, after how many hours it will be positive for him to do a new session by this circuit); every time you put the circuit in function, both for the same subject witness and for any other, always repeat the starting procedure which consists of always testing again the qualities you have to activate on the circuit, since the qualities themselves for the same subject witness could (but it isn't a rule) be different from the last previous session. This powerful graphic, which is very suitable to develop all the great mental qualities hidden and innate in everyone, acts very quickly in the subconscious of the subject witness and so it is possible that, immediately after some sessions, he has a great feeling of inner and mental relief.

RADIONIC CIRCUIT No. 17 – ANTI-DEPRESSING

Graphic suitable for treating all depression cases. If your pendulum suggests you for any subject to use this anti-depressing, make use of it as follows: before making use of this radionic circuit, test by your pendulum if it is necessary to carry out for our subject in question a kind of distance radionic emission or to take the energetic properties of this radionic circuit by means of some liquids.

Here below a list of the various methods:

- for liquids preparation: put in the center of this radionic circuit a flat bottomed white crystal glass and not goblet without promotional writings and let it charge for some minutes (test by No. 4 graphic –the 60 cases- the numbers of minutes needed for the whole charge); test then the number of daily glasses to take (or the number of drops to take under the tongue, also testing how many times per day and how many days or weeks or months)
- for distance radionic emission: put the subject witness at the center of the graphic and ask the pendulum the daily emission times making use of No. 3 radiesthetic graphic of the 24 cases (to test the number of hours of radionic emission) and No. 4 radiesthetic graphic of the 60 cases (to test the number of minutes of radionic emission); besides you can make use of these two graphics to test also the period of all the emission cycle (days, weeks, months). Besides, always thanks to No. 3 and no. 4 graphics, it would be suitable to test also the best times of radionic emission, as the best times to take the charged liquids or the drops.

RADIONIC CIRCUIT No. 18 – PSYCHOSOMATIC HEALING

Powerful circuit for treating all the psychosomatic problems solving every block which would mine every harmony; to make use of this radionic circuit orient it to the north by a compass, put the subject witness at the center of the graphic and ask the pendulum the daily emission times making use of No. 3 radiesthetic graphic of the 24 cases (to test the number of hours of radionic emission) and No. 4 radiesthetic graphic of the 60 cases (to test the number of minutes of radionic emission); besides you can make use of these 2 graphics to test also the period of all the emission cycle (days, weeks, months). Besides, always thanks to No. 3 and No. 4 graphics, it would be suitable to test also the best times of radionic emission.

RADIONIC CIRCUIT No. 19 – CHAKRAS REBALANCE

Graphic circuit for reactivating and rebalancing the charkas (energetic channels or man psychophysical centers); before making use of this radionic circuit, test by your pendulum if it is necessary to carry out for our subject in question a kind of distance radionic emission or to take the energetic properties of this radionic circuit by means of some liquids.

Here below a list of the various methods:

- for liquids preparation: put in the center of this radionic circuit a flat bottomed white crystal glass and not goblet without promotional writings and let it charge for some minutes (test by No. 4 graphic –the 60 cases- the numbers of minutes needed for the whole charge); test then the number of daily glasses to take (or the number of drops to take under the tongue, also testing how many times per day and how many days or weeks or months)
- for distance radionic emission: put the subject witness at the center of the graphic and ask the pendulum the daily emission times making use of No. 3 radiesthetic graphic of the 24 cases (to test the number of hours of radionic emission) and No. 4 radiesthetic graphic of the 60 cases (to test the number of minutes of radionic emission); besides you can make use of these two graphics to test also the period of all the emission cycle (days, weeks, months).

Besides, always thanks to No. 3 and no. 4 graphics, it would be suitable to test also the best times of radionic emission, as the best times to take the charged liquids or the drops.

RADIONIC CIRCUIT No. 20 – CONSCIOUSNESS

This fantastic graphic circuit has got the property to develop universal consciousness of the subject, letting him feel as an integrant part of the universe; so it is possible thanks to this circuit to get knowledge of all the spiritual answers everyone has got the right know for a more harmonious and balanced life; it acts on all levels of the being; to make use of this radionic circuit orient it to the north by a compass, put the subject witness at the center of the graphic and ask the pendulum the daily emission times making use of No. 3 radiesthetic graphic of the 24 cases (to test the number of hours of radionic emission) and No. 4 radiesthetic graphic of the 60 cases (to test the number of minutes of radionic emission); besides you can make use of these 2 graphics to test also the period of all the emission cycle (days, weeks, months). Besides, always thanks to No. 3 and No. 4 graphics, it would be suitable to test also the best times of radionic emission.

RADIONIC CIRCUIT No. 21 – SPIRITUALITY

This graphic circuit lets us to develop a greater knowledge of oneself and of the world around us, becoming a free and open channel of pure spirituality both for ourselves and for the others; it is suitable for who leads an inner search and to better develop one's own intimate knowledge and spirituality; before making use of this radionic circuit, test by your pendulum if it is necessary to carry out for our subject in question a kind of distance radionic emission or to take the energetic properties of this radionic circuit by means of some liquids.

Here below a list of the various methods:

- for liquids preparation: put in the center of this radionic circuit a flat bottomed white crystal glass and not goblet without promotional writings and let it charge for some minutes (test by No. 4 graphic –the 60 cases- the numbers of minutes needed for the whole charge); test then the number of daily glasses to take (or the number of drops to take under the tongue, also testing how many times per day and how many days or weeks or months)
- for distance radionic emission: put the subject witness at the center of the graphic and ask the pendulum the daily emission times making use of No. 3 radiesthetic graphic of the 24 cases (to test the number of hours of radionic emission) and No. 4 radiesthetic graphic of the 60 cases (to test the number of minutes of radionic emission); besides you can make use of these two graphics to test also the period of all the emission cycle (days, weeks, months). Besides, always thanks to No. 3 and no. 4 graphics, it would be suitable to test also the best times of radionic emission, as the best times to take the charged liquids or the drops.

RADIONIC CIRCUIT No. 22 – HEALING MAGNETISM

It is suitable for healers and therapists besides for any subject; the circuit considerably increases the metaphysical personal magnetism of the subject enabling him to draw a greater additional power for him and for the people close to him, drawing this way great benefits at a professional, social and affective level; before making use of this radionic circuit, test by your pendulum if it is necessary to carry out for our subject in question a kind of distance radionic emission or to take the energetic properties of this radionic circuit by means of some liquids.

Here below a list of the various methods:

- for liquids preparation: put in the center of this radionic circuit a flat bottomed white crystal glass and not goblet without promotional writings and let it charge for some minutes (test by No. 4 graphic –the 60 cases- the numbers of minutes needed for the whole charge); test then the number of daily glasses to take (or the number of drops to take under the tongue, also testing how many times per day and how many days or weeks or months)
- for distance radionic emission: put the subject witness at the center of the graphic and ask the pendulum the daily emission times making use of No. 3 radiesthetic graphic of the 24 cases (to test the number of hours of radionic emission) and No. 4 radiesthetic graphic of the 60 cases (to test the number of minutes of radionic emission); besides you can make use of these two graphics to test also the period of all the emission cycle (days, weeks, months). Besides, always thanks to No. 3 and no. 4 graphics, it would be suitable to test also the best times of radionic emission, as the best times to take the charged liquids or the drops.

RADIONIC CIRCUIT No. 23 – ENERGETIC POTENTIATOR

Very powerful graphic circuit which increases the subject personal energy charging him of universal power on all levels; make use of it wisely and with lots of care since the emitted energy is really high; to make use of this radionic circuit orient it to the north by a compass, put the subject witness at the center of the graphic and ask the pendulum the daily emission times making use of No. 3 radiesthetic graphic of the 24 cases (to test the number of hours of radionic emission) and No. 4 radiesthetic graphic of the 60 cases (to test the number of minutes of radionic emission); besides you can make use of these 2 graphics to test also the period of all the emission cycle. Besides, always thanks to No. 3 and No. 4 graphics, it would be suitable to test also the best times of radionic emission.

RADIONIC CIRCUIT No. 24 – SUCCESS

It lets you to realize with success all your aspirations in any fields: professional, social success, success in love, health, games, sport, and so on.... independently of our personal inner powers, the circuit directly acts on the subject personal energy; to make use of this radionic circuit orient it to the north by a compass, put the subject witness at the center of the graphic and ask the pendulum the daily emission times making use of No. 3 radiesthetic graphic of the 24 cases (to test the number of hours of radionic emission) and No. 4 radiesthetic graphic of the 60 cases (to test the number of minutes of radionic emission), besides you can make use of these 2 graphics to test also the period of all the emission cycle; (if your aspirations should be more difficult, keep the witness night and day until you get the result); anyway test for each subject the emission time and days to this radionic circuit bound to the aspiration you are more interested in besides the daily emission times; (anyway, since the beginning it is obvious to measure your aspirations in a coherent limit); for instance: ask your pendulum the following question.... “HOW MANY DAYS HAS (say the name of the subject witness) TO RECEIVE THE ENERGY OF THIS RADIONIC CIRCUIT TO HAVE SUCCESS IN THE FIELD?” (briefly mention the kind of situation)..... and then/or else: “WHICH IS THE DAILY TIME OF RADIONIC EMISSION OF THIS CIRCUIT THAT (say the name of the subject witness) HAS TO RECEIVE TO HAVE SUCCESS IN THE FIELD?” (briefly mention the kind of situation). Besides, always thanks to No. 3 and No. 4 graphics, it would be suitable to test also the best times of radionic emission.

NOTE: EVERY TIME YOU USE A RADIONIC CIRCUIT, ALWAYS FOLLOW THE RULE OF PREVIOUSLY CHARGING EVERY TIME ALL SUBJECT AND OBJECT WITNESSES FOR HALF AN HOUR ON THE RADIONIC RADIESTHESIC CIRCUIT OF THE DECAGON (No.1) OR ON THE RADIONIC RADIOESTHESIC CIRCUIT OF THE AMPLIFIER (No. 5).

RADIONIC CIRCUITS FOR RADIESTHESIC SEARCHES **(their use)**

RADIESTHESIC RADIONIC CIRCUIT No. 1 – THE DECAGON

This graphic lets you to charge, to create and to make reliable any conceived subject and object witness existing in the universe; to charge any kind of witness, put it simply in the middle of the decagon and test by. No. 3 and No. 4 graphics the valorization times in terms of minutes and hours; to realize an object witness created by your own, simply take a little sheet of white paper and write on it in black ink in a readable way, clearly and in capitals your object witness which could be a vibrational remedy, an intention or action, a situation, a particular message, a subject witness and at last..... everything existing in the universe; these charged and realized witnesses will work then for all radionic and radiesthetic uses (*see an example at the paragraph “PRELIMINARIES” at page 11*).

RADIESTHESIC RADIONIC CIRCUIT No. 2 – RESONANCE AMPLIFIER

Thanks to **No. 2** graphic circuit the radiesthetic operator will have a new and particular level of sensitiveness essential to bring his work to an end in a precise and reliable way; putting in action this graphic on the operator, his pendulum will move in a more precise way and without dispersing energy; put this graphic on a table and put your picture (or the picture of the person who is carrying out the searches by the pendulum) where it's showed by the arrow; at the same time put your object witnesses (in this case it will be the little sheet you previously realized and charged on **No. 1** graphic, the Decagon) where you have written “search of the most suitable radionic treatment for.....” and put it in the middle of this graphic together with the subject witness that is nails, hair, and so on.... of the person you have to test and which you previously charged on the Decagon (graphic **No. 1**) for half an hour and if you can put on all a point of a natural rock crystal turned towards the top; leave everything like this until the end of your search.

RADIESTHESIC RADIONIC CIRCUIT No. 3 – THE 24 CASES

Through the geometric shape of this radionic circuit, the operator's pendulum will oscillate more easily on the case corresponding to the most reliable answer which has been chosen through a question which has been posed on the base of numbers from 1 to 24, as for example a time, for a more targeted treatment to know the emission times to the radionic circuits for each subject witness in the terms of hours, any list of numbered answers you can realize always from 1 to 24 (as for the list of the 24 radionic circuits at page 20), and so on.... Through the concentric circles it is possible to get a greater energetic and magnetic power; put any witness to test in the centre of the concentric circles and let your pendulum fall in a perpendicular way in this point; let the pendulum soak the energy of the witness before going on with any kind of question..... (*see at the chapter “THE RADIESTHESIA – THE USE OF PENDULUM” from page 6*).

RADIENTHESIC RADIONIC CIRCUIT No. 4 – THE 60 CASES

The use of this radionic circuit is the same than the previous circuit **No. 3**, with the difference that it has got no. 60 possible answers and in our case it is suitable for testing in minutes the emission times to the radionic circuits for each subject witness for a more suitable treatment, besides for any other uses where you test a question on a list you can realize with no. 60 possible answers.

RADIENTHESIC RADIONIC CIRCUIT No. 5 – RADIONIC AMPLIFIER

This circuit is suitable for the beginner radiesthesian trainings; the characteristics and uses of this radiesthesic radionic circuit are the ones to amplify at a vibration level any witness which has been previously made the most of itself on the Decagon (No. 1 radiesthesic graphic); simply putting it at the center of this drawing for a time needed for the complete charge (see the relative times asking your pendulum on No. 3 graphic for the hours and No. 4 graphic for the minutes); besides it's also possible to use it for every kind of radiesthesic searches by your pendulum getting (thanks to its particular shape) an additional energy and having this way more reliable answers; put in the middle of the figure any witness you have to test and then go on as from page 6, the chapter "THE RADIENTHESIA – THE USE OF THE PENDULUM".

RADIENTHESIC RADIONIC CIRCUIT No. 6 – RADIENTHESIC SENSITIVENESS DEVELOPMENT

The radiesthesic operator to be more reliable in his searches, can widen his sensitiveness also using the auxiliary energy created and emitted by the radionic circuit; put at the center of this figure the radiesthesic operator witness for 20 minutes about before using any radiesthesic instrument; in alternative, to absorb the energy of this radionic device, put the pendulum at the center of this drawing, let it fall in a perpendicular way and mentally express this intention: "I ABSORB THE ENERGIES OF THIS GRAPHIC". At once your pendulum will start to wheel in the anti-clockwise sense to stop after a certain time changeable for each subject; when your pendulum spontaneously stops, this means you have completed the resonance with it so you're ready to pose any question to the pendulum.

CONCLUSIONS

At last, every illness and discord of our being depends also on our mental, emotional and sometimes spiritual state; so harmonizing these basic aspects of our existence through this innovative method of rebalance that is "THE RADIONICS", it can be helpful for everything concerning our life helping us to solve our unconscious and emotional blocks, so that we can feel even more in harmony with ourselves, with the others and with the whole Universe.

IMPORTANT CAUTIONS FOR THE RADIONIC MATERIAL

These graphics must not absolutely be exposed to a heat spring above 50 centigrade degrees and they must not even be exposed to a direct light spring above 40 Watt (then **DON'T PHOTOCOPY** these circuits created in ORIGINAL), otherwise they will irremediably lose their energetic charge. All the graphics are realized on common paper and printed by an ink-jet printer (cold print) with a particular magnetized ink through specific techniques; after using each graphic, this must not be re-used for the next 24 hours, when the form wave will be able to restore its primary energetic charge. Don't keep the radionic graphics locked up in a drawer in a dark room for a long time, every now and then expose them to the light. These radionic graphics during their use work only if they are exposed to the white light (daylight or by the electric one).

BERSERKER

BOOKS

