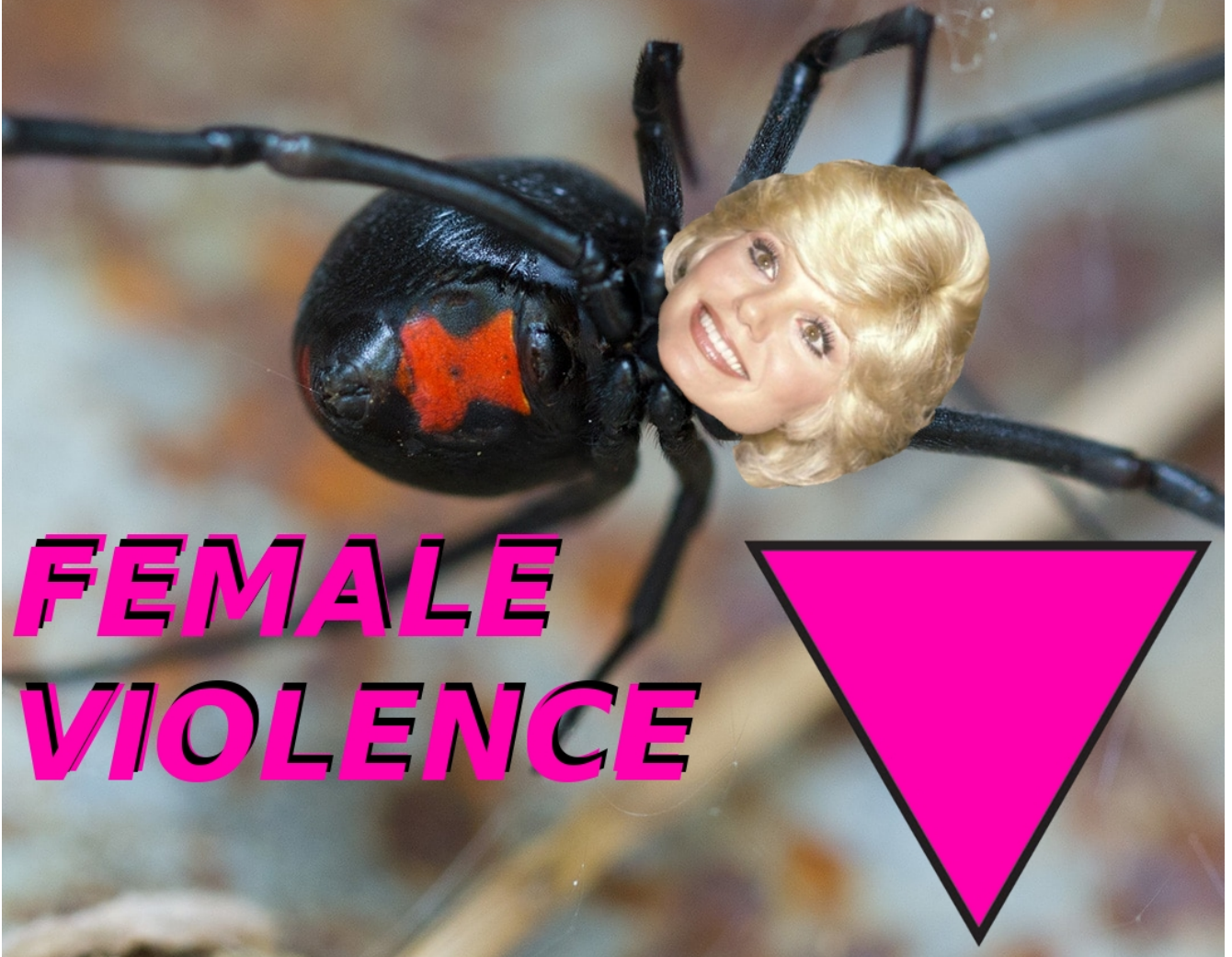


FEMALE POWER



**FEMALE
VIOLENCE**



Female Power, Female Violence

The Mother Goddess religion has never disappeared. It has lurked in the shadows of this world for millennia, its origins shrouded in mystery, the mysteries of iniquity. In modern times (within the period commonly referred to as "The Kali Yuga") this cult has spread itself globally through its Nexuses like strands of a spider's web, undetectable to the 'many-too-many' of 'profane' humanity.

The Mother Goddess can be likened to the figure of Shelob in J.R.R.Tolkein's "The Lord of The Rings". She guards the gates to Mordor, to the higher planes above the physical that one must pass in order to transcend the reincarnation trap of her spiders web.

She exists in the nether regions does Shelob, the Mother Goddess, between the third and the fourth dimensions, in the astral planes with her fellow spiders and their consorts, the shades of her devotees on the earth plane who have forsaken their mortal coil; these and the dark, vampiric entities who steal the souls of men, feeding upon their vital energy both in physical life and postmortem.

Her cult involves an ec-static devotion to these infernal forces and to herself, the Mother Goddess, the undifferentiated Absolute of 'holy chaos', venerated by them on the mundane plane who seek to state their bloodlust and obsession with power.

These beings, devotees of her vile black magic, of sacrifice and the consumption of the living in vampiric rites, have castrated themselves in ecstatic devotion to her image and allow themselves to be transformed into her slaves to attempt the impossible: to sate her insatiable lust for power and their own in the process.

These ecstatic states of consciousness her devotees undergo are designed to attract the entities who dwell within these nether regions or the 'infernal' regions of Being, and to derive power from them in exchange for blood.

The diabolical pact formed between these entities and the devotees of the Mother Goddess have been consistently maintained over millennia possibly without interruption since the genesis of 'mankind'. They are the real cause of world unrest and the whole working of the apparatus of statecraft can be laid before them as the *raison d'être* of the chaotic history of this world.

These consorts of the Mother Goddess are as Hadit in relation to Nuit in Crowlean terms. They are the Baals or Baal priests of the ancient Phoenicians, one of the enclaves of the merciless merchants of Yahweh-Jehovah. Today they are the entire judeo-christian priest caste from Catholic to Protestant to jewry-all priests of the order of Melchizedek who, in conjunction with masonry (with which nearly all are affiliated) serve as the cabal of black magicians who enslave us all in the prison matrix of Zion.

The chaos they create is a pageantry of appearances, simulacra, which blind the masses and obscure the hidden hand working the levers and gears of the Leviathan machine of statecraft and all of its subordinate limbs: economy; judiciary; religious and academic mind control, and other appendages of this beast of Zion.

Simulacra and simulations, veils of appearances, are the principal technology of power of the Mother Goddess cult, her consorts playing the executive role of hoodwinking through such theater of the real, their 'human-all-too-human' profane slave labor, whose potential rebelliousness is held in check by these mayavic veils: rainbow flags; the kaleidoscopic imagery of the virtual-reality mind control machines of the cybernetic dreamscape of illusion; the icons of the church fathers of Mary Magdalene and Jesus her consort, the Ra and Isis of Pisces. All serve to perpetuate the rule of pharaonic power of the Priest Kings, who employed this beguiling and seductive array of sensualistic appearances to beguile and pacify the foolish masses.

Through their black magic of emotionalization, of pairing the image of a virtual reality (icon; photograph; statue; video footage) with certain states of emotion acted out by themselves and their minions in their theater of the real, the witless masses of sheep are conditioned to react emotionally every time they encounter these stimuli, to act according to their mental conditioning in the Pavlovian sense, or better, in the sense of sympathetic magic.

The priests empower the simulacra of image; sound and appearance with certain meaning and cast the image before the purblind senses of the broad mass of their 'flock' before which they then replicate the appropriate behavior, understanding (if they understand anything at all) at an ur-level of their consciousness that, the 'appropriate' emotional reaction means the condition of their continued participation within their herd as one of the kosher branded cattle.

To fail to make overt display of emotional reactivity is to signify my way of absence of the 'appropriate behavior' ones' non-compliance with the consensus gentium and to receive as in the ancient Greek practice, the Ostraka of social ostracism-and beyond this perhaps: damnation; hellfire, or a similar fate.

The Mother Goddess cult operates on the basis of collectivism- either one is in and this totally and completely, or one is out. There is no room for question or dissent-all must be equalized and homogenized within the hive mind, merging with the Mother Goddess in her cosmic womb, to be absorbed within, in the instinctive level of being, the sub-personal.

Such a cult drags one down into the depths of Being, to an infra-human level of being, wherein all are as Oswald Spengler spoke of with respect to women: 'plant-like' in their existence, purely passive objects, as so many flowers in the garden of Gaia and the mother goddess- all else are 'weeds' awaiting their destruction at the hands of the insects in the beehive of masonic collectivist despotism.

Shelob is the archetype of this cult of infra-humanity, with all higher principles of one's being dragged down to the level of the common 'human-all-too-human'. All art and higher achievements and those intellectual capacities which enable them to manifest through 'hue-man' (in the proper sense) agency, are torn down by the pincers of the ants of the anthill as so many weeds into the mulch of leveling equality.

This is 'communitarianism', the postmodern (and yet all too modern, as all too naturalistic and all too lacking in spiritual elevation, a product of the Kali Yuga) socio-political conjuncture that serves as a template for the organization of the 'human-all-too-human', by the Baal priests of the order of Melchizedek, devotees of the Mother Goddess.

Communitarianism is, as Roger Devlin referred to liberalism in his work of the same name: "The Tyranny of Ambiguity", in which no distinct or determinative source of power exists that can be implicated as the agent or agents of policy and decision-making, only a giant bureaucratic network of petty tyrants ruling over their minute and compartmentalized functions as so many folders and sub-folders in a filing cabinet or computer database.

All bureaucrats, just as in the case of the Politburo of the Soviet Union, are identified only by an ambiguous name and title, typically by their first or last name only with an initial beside, or even beyond this a simple title and numerical reference. That such slimy bureaucrats (and 'slimy' by definition) escape any liability for their decisions by concealing themselves in the mass of communitarian ooze or buried within the files and fine print of the 'Bureau' enables them to shift blame amongst themselves and to escape any punishment individually, and especially any threats to their system whose soft power lacks any face or body to identify and obstruct in its blind and short-sighted exercise of power.

The communitarian beehive of society is a concretion of the Mother Goddess, her bureaucratic representatives being the political counterparts to the Baal priests of ancient Phoenicia and the Near East. Beyond and above these (though often identifiable with these) are the black magician Baal priests who exercise the real power above the executive level.

It is they who, in the name of the 'G.A.O.T.U' seek to manifest into being their Temple of Solomon whose structure strikingly resembles a Bureau or public administration building- compartmentalized with superordinate and sub ordinate functionaries who are interrelated as bees in a hive to ensure the perpetuation of the system and its expansion of power, assimilating all within itself and nihilating those unassimilable within its womb-like prison.

The power of the Mother Goddess is extrapolated into being through her consorts, those at the highest levels of whom are undoubtedly females themselves, members of female masonry who are the priestesses of the Mother Goddess: Cybele; Isis; Mary Magdalene; Gaia Sophia. These material females are governed by the Instinctive Mind and serve 'The Whole' (the hole) of the Mother Goddess, fractal microcosms of her macrocosmal non-being, her cosmic web of astral light.

Like so many queen bees governing the hive they carry out- perhaps without any conscious thought, operating at an instinctive ur-level of consciousness- their tasks within their own particular sphere of mundane reality and (again instinctively as if in answer to some form of telepathic transmission of communication from the Mother Goddess and her mundane representative, Gaia Sophia) to simply

act in a manner coherent with the will of Isis, for the perpetuation of her static non-being and mundane finitude on Gaia-as Gaia.

The political concretization of the hive mind in communitarianism is a female expression of power: a ubiquitous state of static inertia lacking the dynamism of the Divine Masculine. The maintenance of female power operates as Shelob in her tenebrous webbing, her network of obstruction to the development of higher and more complex forms of culture, the flower of the dynamism of masculine power.

Female power in its inertia thus constitutes an obstruction to that of the masculine spirit, to the Solar-Uranian forces of the Divine Masculine. In its proper place it stabilizes the masculine forces but, when the latter slackens its tension of development or the former has enveloped and assimilated the latter through a pre-existent imbalance of the energies, inertia is the result and entropy, a gradual catagoric process of breaking down occurs, of disintegration as the higher is assimilated into the lower through the process of leveling equality.

The end result is the multicultural wasteland of the cloaca genitum, the morbid stagnation of the higher which is sacrificed at the expense of the lower, leading to 'the reign of quantity' in the words of Rene Guenon in his book of the same name. The telluric rites of Dionysian in ecstasy, of the chaotic emotionalism of the Mother Goddess, are the residue of this disintegration process, ultimately terminating in the gory residue of the mysteries of iniquity, bloody sacrifice, vampirism and cannibalism.

From this point the dark forces gain mastery of the earth, absorbing the energies of their savage and debased slaves into themselves, accelerating the entropy of the higher life forms of the earth who have become detached from higher planes of Being. Within the spider's web of Shelob the hapless flies anesthetized by her venom lie contentedly in her webbing awaiting the vampirization of their life force.

The female forces which seek the vampirization of the life force of others, descend upon the net of the matrix of the dark forces and feed upon the expendable flies who serve them as their soul food.

In more mundane terms this comes in the form of wage slavery, the debased and sub-intellectualized masses being reduced through the process of leveling equality to the state of witless drones of sub-personality, mere robots, sub-human batteries which serve the system and exist only in its service. This is the policy of white slavery and specifically of white male slavery- the concealed castration of white men from an in utero state and throughout their developmental period, developing in the image or simulacrum of a 'worker bee', a proletarian slave of the hive mind of Gaia Sophia.

To maintain their collectivist despotism the matriarchy and there castrated Baal priests, the brethren of the Lodge, make use of the virtual-reality apparatus of 'the theater of the real' through which all acts and figures observable to the public are assimilated into thei mass mind consciousness as a distinct type (archetype) with a distinct meaning.

This is designed to condition the conscious mind to adopt certain behaviors and to serve as a crook leading the flock of sheep back into the pen should they stray (if only in potentia) to be sheared and ultimately slaughtered. The notion of pre-crime applies here especially to those few white men still worthy of the name who have not allowed themselves to be castrated by the matriarchy of the Mother Goddess through psychosocial enervation and mutilation of their being by their female and effeminized teachers and social superiors in the hierarchy of the masonic beehive.

The Judeo-Christian churches took the Mother Goddess cult in a slightly different direction but nonetheless serves Her in Her aspect of Mary Magdalene and her 'Christ child', the initiated figure of a 'Christ' or anointed one, deriving from the Egyptian mysteries of the 'krestos' or crocodile fat with which the initiates into the mysteries were anointed.

The archetypes of 'Christ' and 'Lucifer' were Piscean age contemporary variance of that of Horus and Mithras, of Attis and Dionysos, syncretic amalgams of the archetypes of the Mother Goddess and her consort in the Near East and Mediterranean region.

For the masses this figure functioned as an exoteric figure with a historical presence whereas for those selected to elevate themselves up the ladder of the masonic-christian hierarchy he was a symbolical archetype of initiated gnosis, he who had attained enlightenment through the prescribed rights, attaining varying degrees of 'light'.

Through such process the initiate became the servitor of the dark forces, his soul becoming captive as he merged with the hive mind of the Mother Goddess, gradually losing the autonomy of his soul.

It was the pageantry in imaginary dreamscape and priestcraft which served as a shepherd's crook to hook him into the fold and to bind him there in hypnotic fascination with the spectacle of female power, a covert and seductive form of fatal attraction, like a black widow spider enticing her victims into her web with her alluring red pattern on her otherwise shining black body (the arachnoid equivalent of lipstick and latex?).

The female violence of the Mother Goddess cult operates on the basis of illusion: the apparent good being served up as a simulacrum, as mask or spice which conceals a real harm beneath- the false appearance of the 'working-class hero', concealing his slavery and abject serfdom before the Baal priests and priestesses of Isis. Lady liberty serving as a simulacrum for the collectivist despotism of matriarchy.

The power of matriarchy is thus implicit and unidentifiable, operating clandestinely and through proxies (themselves simulacra) in a ubiquitous network behind which the Mother Goddess lies. The political theater of democratic politics and its faux opposition amount to nothing but illusion, a mechanism of distraction and means of controlling the witless pawns of Zion.

The proxies behind which matriarchy hides serve to shift attention from the real power which exists covertly behind the scenes. This power has usurped, through its subterranean process of assimilation of the power of others as a black widow spider, near total power to the degree it can be spoken of as 'Absolute'.

And yet the black widows, the Shelob spiders who hide behind simulacral masks of overt power, of particular appearances of power, are not to be seen, identified or held accountable. They, in their Absolute or near Absolute power of the Absolute, the Mother Goddess, have simultaneously Absolute unaccountability, zero liability for their violence.

Hence their violation of the 'Other', of the Divine Masculine and the differentiated man of the Aryan is of a passive aggressive, female nature, the natural modality of female violence being passive aggression. Shelob strikes in the darkness and her venom does not have immediate affect but operate slowly, her bite typically undetectable to the 'mundane' who misunderstands the workings of her subtle and instinctive web spinning of political machinations.

To the masses of flies in her web of bureaucratic despotism she, the female face of the Mother Goddess is 'innocent darling, innocent' and her cosmetic mask which conceals her power and her instinctive workings is a simulacrum readily torn aside by the penetrating wisdom of the man of race, the differentiated man who is not subject to the influence of the theater of the real and who understands through reason and intellect that that it is all just a simulacrum of power itself and it is the simulacral nature of matriarchy in which this power lies. To tear aside the mask from the face of Shelob is to lay bare her true face- that of the cthonic, sub-personality of the hive mind.

The functioning of female power comes in the form of the prohibition of the schoolmarm: a dogmatic, rule-bound pedantry without liberty to deviate from the 'rules'. That is unless such deviance entails an activation of the libidinal, and activation of the Eros and Thanatos dimension of the instinctive mind with its cthonic excitation and the Dionysian ecstasy. All else is a prohibition and a perpetual spying and control-freakish micromanagement of everything and everyone, wrapping up all difference in the wedding of Shelob.

Jewish power, in spite of its macho façade, is female and hence works in tandem with the power of matriarchy. Whether jewry or the Masonic elite of the female illuminati are ultimately in power is a question that requires further investigation so that the crosshairs of one's mind are placed on the proper target and the subjugation of the collectivist despotism can be achieved as a victory for the higher culture of the world and for Aryan mankind.

Female consciousness is inherent in jewry as Otto Weininger, the jewish philosopher and writer of the book "Sex and Character" (1903) Contended and spoke of as an authority on the subject: "Our age, which is not only the most Jewish, but also the most effeminate of all ages."

Nietzsche also spoke of the Dionysian tendency and female mode of consciousness of Jewry although he praised them as well, having been assimilated into their hive mind if only to a degree through a female influence: that of Lou Andreas-Salome, who had captured him with her hypnotic or mesmeric influence, that so characteristic of a woman, amplified through her being Jewish (hence, though of a brassy and controlling nature, being the embodiment of female consciousness-both Jew and woman).

The Jewish type is that which Nietzsche also spoke of as embodying the Semitic tendency which the Arabs had overcome and which Jewry had failed to overcome: that characterized by Julius Evola in "Three Aspects of the Jewish Problem" as Dionysian, a lunar, mutable quality given toward irrational outbursts and emotional pathos.

Such emotional pathos was translated by Jewry into their religion of Judaism which is purely devotional and submissive toward an irrational deity who throws temper tantrums without apparent cause, a veritable 'tempest in a teapot' form of spirituality. Whether Jewry created this religion based upon their consciousness to a degree and/or they were created by this entity (The Demiurge? Jehovah-Yahweh?) is a question.

Regardless the religion of Judaism and the anti-race race of Jewry are intertwined and amplify one another in a dialectic of expansionism: a Will to Power, to control and enslave, and this based upon a chaotic feminine consciousness. Indeed the consciousness of females is mutable, like the moon, and can properly be spoken of as 'Lunar' just as can that of the Jew as any can observe by way of inferring the inner from the outer, the mind or consciousness inferable from the behavior and action.

Though Weininger stated opposites attract (at least in sexual terms), 'sameness' attracts also as Baltasar Gracian, the Spanish Jesuit said: "like attracts like as surely as the lodestone attracts iron" and "birds of feather flock together" as a proverb has it.

Hence Jewry and females gravitate toward one another on an instinctive basis, without any conscious awareness and form a Mephistophelian pact with one another on the basis of sympathetic resonance. Of course exceptions to the rule apply, however the general principle of sympathy between females and Jews applies which explains the relative ease through which Jewry may penetrate into Aryan society and indeed in any society, as a pleomorphic parasite, ingratiating himself with the host by way of female sympathy.

Of course it can be argued that the Aryan man (or non-Jewish males in general) are to blame in permitting the females have power over them, to indulge the females in their whims which latter are typically only a test of male strength and which is the nature of females as so to speak 'vessels of nature' in its selection of the strongest and wisest to perpetuate the species and elevate it in accordance with the natural teleology of the type.

The religion of jewry is tribal, collectivistic and other than an oligarchical theocracy of rabbis, unidentifiable and hidden in its power and hence functions in a subterranean manner in its political praxis: centered around intrigue and legerdemain, a strategy of female hypertrophy, growing in power in an imperceptible manner..

Max Weber's book "Ancient Judaism" expounds upon the tribalistic nature of judaism. He does not go far enough in failing to recognize that this tribalism is a projection of the consciousness of jewry, that of the hive mind of the Demiurge which works through them as an instrument, the octopus working through its tentacles in its mad grab for power, seeking in its instinctive trieb to strangle the earth and vampirize the souls of its denizens in its beak. Yahweh-Jehovah was apparently a female 'pagan' Canaanite deity before being reformulated into its current form.

Christianity being a shadow cast from the original formation of judaism is itself of the female nature. This can be seen in the effeminate pathos, so archetypically 'semitic' (Near Eastern) of the figure of Jesus, whose emotional paste those epitomizes the frenzy of the Dionysian modality of Jewish consciousness: aggressive in the sense of a 'macho-man Randy Savage' of wrestling infamy and yet motivated by a schizoid and 'visionary' or delusive imagining faculty that leads to an either extroverted hitting out or striking at others (the non-tribal 'Other', the 'goyim') or an inward directed self-abasement; flagellation or suicide as Otto Weininger; Carlo Michelstaedter and Arthur Koestler realized their fate.

Indeed fatalism is a natural orientation of the 'semitic' or Near-Easterner and this presumably based upon their hybridity and/or their alien origins which leads to their having no future beyond this earth and their souls' reincarnation and gradual entropy thereon. Hence their fatalistic resignation with respect to life, and this translated theologically into their Tanakh and their deities' 'plan' for the 'inevitable' end times (prophecy as inevitablism).

This is contrasted with the Aryan conception of a manly comportment toward the Divine and a carving out through will and skill of his own proper destiny, a heroic striving for the transcendent and for conquest and power.

The power sought by the Jews and Christians as well as females is that of an invisible nature, a subterranean or clandestine power grab. In their specious minds they are 'victims' who 'just want to have peace' and anyone and anything which contravenes even only *in potentia* the particular agenda is 'violent' as in a 'violation' of their Will to Power, their survivalistic propensity which is a costume in which their Will to Power takes form.

They 'believe' it but refuse and perhaps cannot know their true, inner motivation. They are blinded by a survivalistic instinct which necessitates not self-control oriented toward the Divine and a stoical indifference to death as in the case of the Aryan, but a desire to control others and everything 'Other' to themselves. Their 'world fear' as Heidegger called it, is their motive principle as well as their desire which operates in an uncontrolled manner and hence projects itself upon the world as the pestilence

which has escaped from Pandora's box unlike in the case of the Aryan who sublimates desire and uses it as directed energy to achieve victory both on the earth in a harmonious state form as well as in the stars.

The mutable nature of the Jewish type attracts those of a similar nature to itself: females and effeminate males especially those of the Oriental and far Eastern, specifically Chinese variety, form a combine on the basis of elective affinities and this can be seen in tangible manifestation today with the respective geopolitical power blocs: the masculine pitted against the feminine, each group interpenetrating both anatomical sexes: effeminate males; Jews; and the sympathetic non-whites along with most females on one side and on the other the more constant and spiritually-oriented toward the transcendent or at the very least the Titanic lower octave of masculine consciousness: some sub-groups of Latin America and some distant affiliates amongst Negroes; Redskins and the more Caucasoidal Arabs.

The distinction here is between the spiritually-oriented, those who direct the focus of their will toward the Divine and yet in a fixed and unwavering form, and those whose will is oriented toward the mutable and transient both in terms of mental state; behavior and its expression-'Yin' in Chinese Taoist terms as opposed to the 'Yang', of what Evola called the 'Solar-Uranian' spirituality of the Aryan and related types.

The dark feminine of the 'Yin' principle manifests itself in various ideologies which are its expression and which, though apparently divergent and even conflictual, are mutually self-supportive and are particular programs which have the same goal as their 'pot of gold' at the end of the rainbow, that being total power and the formation of a despotic government structure.

These ideologies have not formed only in the recent centuries but have been a presence perhaps since the time of Lemuria. What is called 'liberalism' today has often been and indeed in many extremist circles (doctrinal circles?) of Christianity identified as 'Satanism', has pervaded the world and its history for millennia and has the common denominator of the Mother Goddess and the Dionysian rites related thereto bound up with it as an inextricable chemical bond.

The Mother Goddess archetype is a presence in the more esoteric basis of liberalism- Gaia Sophia; the astral light, Isis, etc., liberalism being an exoteric and mundane crystallization of these ideas. The Mother Goddess and her consort are reflected politically in the figure of 'society' or 'the community' and the individual members thereof- the former being as a hive and its Queen Bee in relation to the soldiers and drones who serve her agenda and who are fused with her in the hive mind collective consciousness.

However it is not liberalism or even an occult or secret society form of the Mother Goddess which is the exclusive form of female power in modernity within the Piscean age. The Christian religion, being a formulation of the Jewish consciousness of feminine pathos though incorporative of Solar-Aryan

elements, is nonetheless also incorporative though to a lesser degree of the archetypes, one might more properly say of, the consciousness of the Mother Goddess.

Hence there is Mary Magdalene and the apostolic jewish figures (her consort's) who by virtue of their behavior, at once communistic and passive, embody the female consciousness only with elements of the 'macho Man Randy Savage' variety (irrational machismo and a swaggering bravado, eg. King David).

The symbolism of judeo-christianity has connotations of the Mother Goddess: the cathedrals and churches typically, at least before they were further reduced in their quality to mere mass-produced structures amidst 'the reign of quantity', were of an ovular shape in their doorway tapering at the top, conveying a simulacrum of female power to those who entered, to them serving as 'a witness' of the Mother Goddess, her 'Shekinah glory', that of the female 'Holy Ghost'.

The robes of the priests, be they Protestant or Catholic, were typically of a female nature, long and flowing, concealing their actual sex beneath and connoting the traditional dress of the Middle East and Mediterranean with its feminine consciousness. The black suits of Catholic priests with a white-collar clearly revealed the yin-like darkness of the hidden or all pervading nature of the astral light, of cosmic chaos, the Mother Goddess, the white part of the collar conveying perhaps the manifestation of the Divine Masculine Father God organizing the chaos in its differentiation of forms, the white patch being placed over the throat chakra, the locus of the 'Word' or 'Verbum', the 'Logos'.

The effeminate manners and whispery nature of the priests also convey the Mother Goddess in her representatives. The ecclesia or church is a physical concretization of the vagina and the parishioners are the fetuses within, who are being gestated with the 'Word' or 'Logos' through which they become 'christians', or devoted servants of the consort of the Mother Goddess, Christ.

The spectacle of the Mother Goddess though veiled behind the apparent masculine Father God is ever present and pervades Christianity and all this particular sects. The spectacle and pageantry of churchianity operates on the basis of simulacra, appearances and images of a wholly female nature—that which is discrete, spoken of in whispery tones of 'the sacred' and typically depicts the effeminate jewish males who star as the anti-heroes of 'Scripture' and the ubiquitous motif of the Virgin Mary and 'the Christ child', the re-presentation of the Mother Goddess and her consort.

Such imagery and theater spectacle of the Mother Goddess, conditions the sheep to adopt the mannerisms of a female, paradoxically even the most manly, (rather 'macho') of males: irrationally aggressive; emotional; mutable in their consciousness (a lunar-semitic mode of 'souliness') and controlling.

Indeed the political manifestation of this consciousness is female and there is little difference between the female mode of liberalism and that of christianism: both are control-freakish and despotic and embody themselves in a technology of power which is ubiquitous, pervasive and totalitarian.

Both are intolerant of anything not pacifistic and oriented toward a quasi-sensualistic emotionalism- anything that places one in a pleasant state of being and which enables one to ignore the unpleasantness of challenges and existential threat which enhance and enable a transcendence of this base state of contemplative pacifism.

The technologies of power deployed by the regime of the Mother Goddess are the illusory power of simulacra- theater; appearances of threats to frighten people into submission; the panoptic vision of the police state and its spy network of citizen spies ('community policing' or 'citizens on patrol').

This is not to say that there is no credibility to the threats- far from it. The female power structure by virtue of its essence is that of female violence. The voyeurism of gang-stalking (the particular form of the spy network in action) is the sexual component related to the sadistic thrill it gives its participants, which sadism is the death-drive component of the instinctive minded nature of female power oriented around the pleasure principle, the phallic totem having a skull impaled at its apex.

Sex and death, Eros and Thanatos, unite in the libidinal nature of the instinctive mind of the ants in the anthill of the tellurian community. All are part of the hive mind which, by virtue of its ubiquity, drags down all to the lowest level of beast-consciousness, to the instinctive hive mind of what Evola called 'the animal ideal', the activation of the reptilian brain (pons; medulla and brainstem), of the instinctive mind with its self fixation on the sex-death connection, one wholly female (Holy Chaos, the principle of the Mother Goddess).

Hence the delight in sadism is the activation of the primitive mind which perpetuates itself in the gang-stalking praxis with its harassment and passive aggression; shunning and abuse of members of the anthill who are disqualified by the Queens as members- members become pariahs and the differentiated men who are incapable, by virtue of their essence, to participate in a hive mind rooted in primitive drives: sex; death and 'the belly' and genitals which are the basis of its 'philosophy'.

The Mother Goddess in her lower aspect is reflected in modernity and across the spectrum of ideology she has gestated as her ideoplasmic progeny: liberalism; christianism; libertarianism with its obsession with consumerism, the base tendency toward matter without form.

The female power latent within these ideologies manifests itself to the behavior of their adherents and serves the solidification of the hive mind which entropically closes in on itself under this influence of a hive mind collective consciousness, of a lunar-telluric form, directed toward the lower states and a rooted in the mire of the primitive, of an undifferentiated chaos of the multi-kult, wherein 'everyone is equal' in relation to the cosmic womb of the Mother Goddess, absorbed into non-being as a satanic rite of the extinction of identity, of difference.