

## Seven Rays

Did you ever notice that the Sun Ray travels very far. From the Sun-Globe upto our Earth the Ray travels and functions as life force upon the planet. The beauty of the Sun Ray is, it permeates while travelling from Sun to Earth. It is expansion through travel. The Sun Ray is responsible for all life on the planet and is the life of the planet itself.

The Sun Ray likewise travels to other six planets also. Around the Sun, seven planets make movements, including the moon, which is considered as a planet for astrological purposes. Mercury (☿), Venus (♀), Mars (♂), Moon (☾), Earth (♁), Jupiter (♃) and Saturn (♄) revolve around the Sun (☉).

Thus, the Sun is the Centre of all the planets/planetary bodies and is the transmitter of Light and Life to all planets. The Ancients and the Scriptures tell us that Sun is not only the transmitter of Light and Life to the planets, but also the cause of the planets' birth, formation and growth. So the seven planets take birth, grow and act with Sun as their life principle.

So is the case with us. In us also the Sun functions as the life and light principle. The seven rays of the Sun that form the seven planetary bodies also function in us as the seven planetary principles. Let us see how the seven Ray principles function as the seven planetary principles in us.

1. The Will we carry in us is the function of the principle of Sun (☉).
2. The Wisdom and Love we carry in us is the function of the principle of Jupiter (♃).
3. The Intelligent Activity we carry is the function of the principle of Mercury (☿) in us.
4. The instinctive attraction to beauty and splendour that we carry is the function of the principle of Venus (♀) in us.
5. The process of reflecting upon our thoughts, thinking, understanding, reacting to life, is the function of the principle of Moon (☾) in us.
6. The force we carry in us is the function of the principle of Mars (♂) in us.
7. The material body (that holds all) that we carry is the function of the principle of Saturn (♄) in us along with the principle of Earth (Material).

Let us recapitulate. From Sun the Sun Ray emerges. The Sun Ray has seven qualities. The seven qualities of the Ray form the seven planets of our solar system. The seven Ray qualities also form the human body. The seven planets function according to the seven individual qualities. The human being functions with all the seven qualities of the Sun Ray. Thus the seven Rays emerging from Sun form the Solar System and the human body. They are the main functionary principles for the Solar System and the human being.

How do the seven principles of the Solar Ray function through our body? Through what centres of the body they function? This is necessary for us to know. Is it not?

1. The Will functions through a centre of the Head (Sun ☉).
2. The Love-Wisdom functions through a centre in between and just above the Eye-brows (Jupiter ♃).
3. The Intelligent activity functions through the Throat Centre (Mercury ☿).
4. The experience of beauty, splendour and bliss (happiness) through Heart Centre (Venus ♀).
5. The Mental activity of reaction i.e., behavioural functioning happens through the Centre at the Navel (Moon ☾).
6. The force -- the emotional force which is a lower manifestation of the Will (No.1 above) functions through the Centre which is called the Sacral Centre (Mars ♂).
7. The materialisation of the body, its consolidation, formation, growth and decay happen through a Centre at the base of the Spine (Saturn ♄).



1. Head Centre
2. Eye-brow Centre
3. Throat Centre
4. Heart Centre
5. Solar Plexus Centre
6. Sacral Centre
7. Base Centre

In the Wisdom books these centres are called:

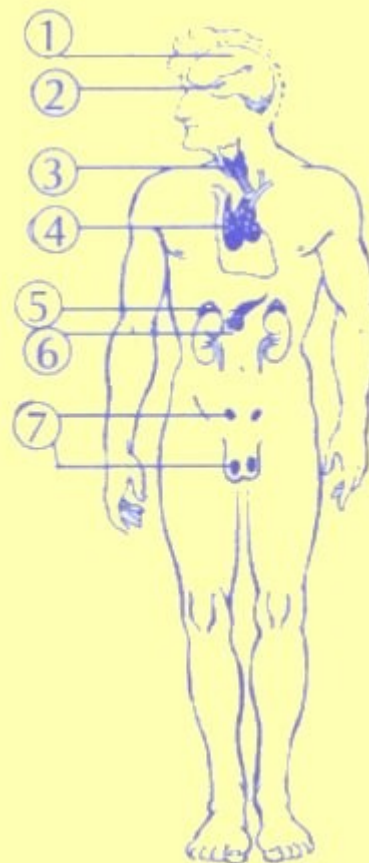
English	Sanskrit
1. Head Centre	Sahasrâra
2. Eye-brow Centre	Âjnâ
3. Throat Centre	Visuddhi
4. Heart Centre	Anâhata
5. Solar Plexus Centre	Manipûraka
6. Sacral Centre	Svâdhistana
7. Base Centre	Mûlâdhâra

The Seven Ray principles function through the Seven Centres of the body and stimulate the seven glands of the body. The Glands in the body secrete and help formation of the body tissues which are also Seven!

If there is proper secretion of the glands, there is harmonious functioning of the body. If not, the body lacks in harmony, which is called disease. Since the secretions cause harmony in the body they are called hormones. If there is hormonal disturbance, we suffer incurable diseases. The functioning or the non - functioning of the glands depend upon the functioning state of the seven centres in the body. The functioning of the seven centres is dependent upon the behaviour of the man. If man behaves well, i.e., with full understanding of the seven centres and their functioning, he can be healthy and harmonious. If not, he lands up in mental, emotional and physical disorder, called disease. Disease is only lack of ease. Ease is health.

The seven glands in the body are:

1. Pineal
2. Pituitary
3. Thyroid
4. Thymus
5. Adrenal
6. Pancreas
7. Gonads (Sex glands)


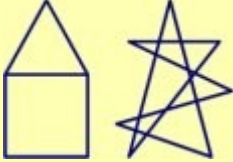


The seven glands correspond to the seven centres, the seven planets and the seven rays in the order given. In the average human being all the glands do not secrete. Only in a perfect human being like KRISHNA, CHRIST, BUDDHA, there is co-ordinated, harmonious secretion of all glands. Especially, the secretion of the glands in the head happens only to highly spiritual people.

Through good conduct, a man can enable functioning of the centres of the body,

which enable proper secretion of the glands. The Masters of Wisdom know the sound key, the colour key and the symbol relating to these centres. They use these keys to retain healthy and effective bodies. They follow a specific practice relating to Sound, Colour and also relating to their attitude towards other beings. We too can adopt the same practice to regain our pristine state of body.

Just for your information, I also give you the seven colours and the seven symbols, with which you can work, after you follow the behavioural instructions given in this book.

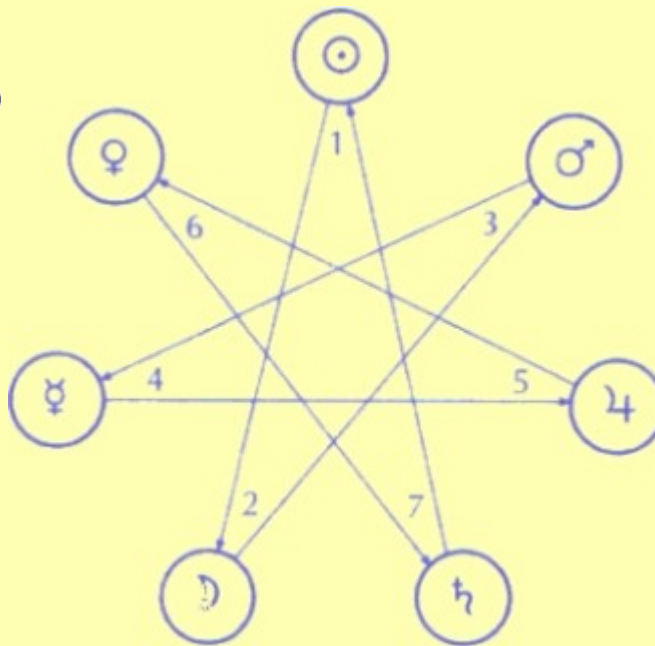
Ray	Colour	Symbol
1	Indigo	
2	Blue	
3	Brilliant Green (Aquamarine green)	
4	Golden Yellow	
5	Orange	
6	Silver grey	
7	Green	

You can now prepare yourself a comprehensive table ([see appendix](#)) of the seven rays, seven planets, seven centres, seven glands, seven colours and seven symbols. See how beautifully everything in creation is arranged seven-fold. The seven also exist as seven planes of consciousness and as seven bodies which I have already explained to you.

## 7 Rays and the 7 Days

There are seven days in the week which also correspond to the seven planetary principles. Let us see how it is:

- |              |         |   |
|--------------|---------|---|
| 1. Sunday    | Sun     | ☉ |
| 2. Monday    | Moon    | ☾ |
| 3. Tuesday   | Mars    | ♂ |
| 4. Wednesday | Mercury | ♿ |
| 5. Thursday  | Jupiter | ♃ |
| 6. Friday    | Venus   | ♀ |
| 7. Saturday  | Saturn  | ♄ |



The seven days also correspond to the seven great cycles of Time called *Manvantaras*. The whole creation is explained as a big cycle of Time in which there are relatively smaller cycles of Time, which are seven in number. They are called *Manvantaras*.

*Manvantara* is a cycle of time; a great cycle of time. There are fourteen *Manus* who are but seven pairs. Each one has a span of operation. The time cycle relating to one such operation is called a *Manvantara*.

A creation emerges and merges back through fourteen *Manvantaras* representing a day of *Brahmâ* (24 *Brahmâ* hours). Such cyclic happenings happen for hundred *Brahmâ* years.

The understanding of time and its cyclic happenings is one of the seven keys to Wisdom. It is called a *Vedânga* namely *Kalpa*. The cycles of time are well recorded in the scriptures. Seven cycles of time are worked out through seven pulsations of the creator. Each pulsation carries in it a two-fold activity—an exhalation, an inhalation. The exhalation is presided by one *Manu* and the inhaling activity presided by his counterpart. By seven pulsations, the seven planes appear and disappear and the

process is cyclic.

Just for our understanding, let us tabulate and see what a *Manvantaric* period is.

A *Yuga* is considered a time cycle and

- *Kali* stands for one Unit of such time cycle.
- *Dvâpara* means two times such Unit.
- *Tretâ* is three times such Unit and
- *Krita* is four times the Unit.

<b>Yuga</b>	<b>YEARS</b>
<i>Kali</i>	1 x 432 000
<i>Dvâpara</i>	2 x 432 000
<i>Tretâ</i>	3 x 432 000
<i>Krita</i>	4 x 432 000
1 <i>Kalpa</i>	10 x 432 000 = 4 320 000

72 *Kalpas* = 1 *Manvantara*  
14 *Manvantaras* = 1 day (24 hours)  
of *Brahmâs*

365 days of *Brahmâs* = 1 year of *Brahmâs*

100 years  
of *Brahmâs* = the life of a *Brahmâ*

The present *Brahmâ* is called *Padmabhû*. He is 51 years of age. The present *Manu* is called the *Vaivasvata*.

So let us see where we are. We are in the *Padmabhû* creation, in *Vaivasvata-Manvantara*, in the 27th *Kalpa*, in *Kali Yuga*, upon the planet called *Jambu Dvîpa* and in the Year *Chitrabhânu*(2002/2003).

The Seven Rays of the Sun, which are responsible for our Solar System's existence are also called the seven horses. The scriptures, therefore, say that "seven horses move a car (chariot) of seven wheels. Seven wise men mount them along with seven fecund nymphs of water" Meditate upon this sentence daily.

The seven Wise-ment that mount the seven horses are:

<b>Ray (Horse)</b>	<b>Quality</b>	<b>Sanskrit-Name</b>
1.	Will	Sushumnâ
2.	Love-Wisdom	Harikesa
3.	Intelligent Activity	Visvakarma
4.	Harmony	Visvatryarchas
5.	Concrete Science	Sannaddha

6.	Devotion	Sarvâvasu
7.	Law & Order	Svarâj

We should learn to work with the energies of the Rays by learning the practical techniques from the Teachers. I give below a brief description of the Ray powers that help us in perfecting ourselves.

### **1. Sushumna (The Will)**

The Will in us drives us to perfection in the service of power. Some of us are placed in life in powerful positions. In so far as the power is served through Love in activity, the Will makes us perfect. Many powerful men lack Love and hence they perish by the very power they serve. Serving power through Love is the keynote of this Ray.

### **2. Harikesa (The Love- Wisdom)**

The Wisdom and Love in us help us to perfect ourselves through realisation of our Oneness with all Life. This is service of Love through Love in activity. We find many men of wisdom and divinity working through this Ray. They see the Oneness of all. They include, but do not exclude. They tolerate, forbear, forgive and are magnetic. They are friendly to all life.

### **3. Viswakarma (The Intelligent Activity)**

This Ray in us helps us to grow perfect by intelligently utilising all we have for service. "Utilisation of all in the Service" is the keynote. People, who work in this manner know the utility of everything in creation. They carry a good understanding of the use of everything. "There is no waste thing, but only wasted thing" is their understanding. We waste away things when we do not know their value. Using this quality in service makes us best utilisers of Nature's resources. When this Ray quality is not used in service, people become commercial and exploit others.

### **4. Viswa Trayarchas (Harmony)**

This Ray quality helps us to dissociate from gross forms and associate with the beauty, splendour and rhythm of the inner life. Every form is the product of the functioning of Sound, Rhythm and Colour. Sound when rhythmic produces colours and colours in turn precipitate forms. So, working with this Ray enables realisation of the inner beauty of the Outer-form. We become students of Sound, Colour and Rhythm when we work with this Ray. We grow to realise more the inner life of the form than the form itself.

### **5. Sannaddha (Concrete Science Or Knowledge)**

This Ray in us helps us to intensely apply our mind to some problem for helping life. It can be, working to solve some racial problems or uplifting the cause of plant or animal kingdom. It is a process of continuous, intense application of our concrete



mind to find solutions to apparently insurmountable problems of a race or a species. Scientists are born through the influence of this Ray. Inventions and discoveries are the result of such intense application. Submitting every quality of mind to the cause with an attitude of service makes man a great benefactor of society when this Ray quality is realised. It drives man to perfection forcing him to utilise all knowledge in the loving service of his race.

## **6. Sarvvasu (The Sacrifice In Service Called Devotion)**

This is the quality of sacrifice in us. It is single pointed application of oneself to an ideal. In sacrifice for that ideal, we burn up all our impurities and reach a pure state of experience. This is the path of self-sacrifice to an ideal visualised.

## **7. Swaraj (Independence or Liberation Through Rhythm, Law And Ceremonial Magic)**

Adaptation to Rhythm in Life, through understanding of the Law that wields the system is the activity belonging to this Ray. It is a process of continuous application of the Law upon One's own life to build the temple within. It demands long years of systematic functioning in a line of service.

*out of K. Parvathi Kumar 'Mithila A New Age School Syllabus'*