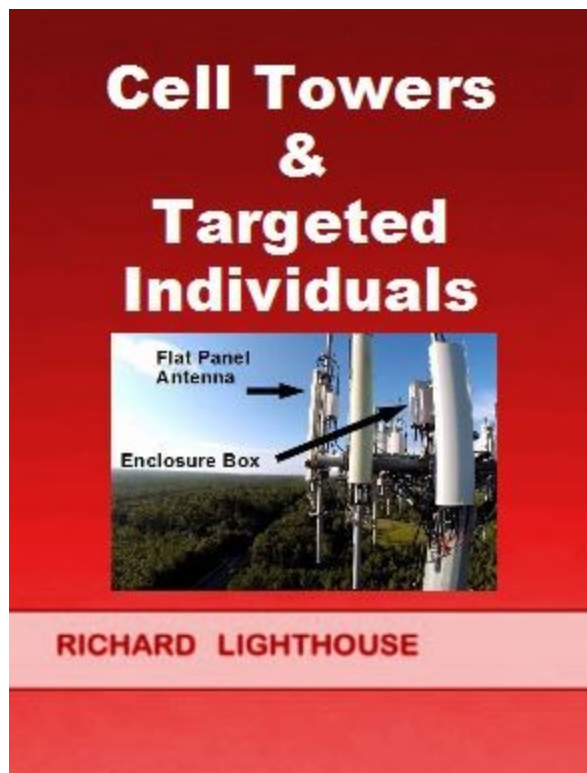


# Cell Towers and Targeted Individuals



Richard Lighthouse

Cell Towers and Targeted Individuals

Published by Richard Lighthouse at [smashwords.com](http://smashwords.com)

Creative Commons License 4.0; by Richard Lighthouse. Please acknowledge source.

ISBN: 9781370905508

[www.smashwords.com/books/view/757833](http://www.smashwords.com/books/view/757833)

[RLighthouse.com](http://RLighthouse.com)

Limit of Liability/Disclaimer of Warranty: This short ebook expresses the opinions of the author. All comments and statements in this ebook are opinions of the author. If you disagree with these opinions, then write your own book. While the author has used his best efforts in preparing this document, he makes no representations or warranties with respect to the accuracy or completeness of the contents and specifically disclaims any implied warranties or fitness for any particular purpose. No warranty may be created or extended by sales representatives or sales materials. The author does not advocate violence in any form.

All readers are encouraged to do their own research.



RLighthouse.com

Many of my books can be found for FREE at RLighthouse.com and other websites.

Original 1A – 7 November 2017  
Houston, Texas, U.S.A.  
Revision 3C – 10 March 2019

"Those who would give up essential Liberty, to purchase a little temporary Safety, deserve neither Liberty nor Safety." - Ben Franklin

Cell Towers and Targeted Individuals

## TABLE OF CONTENTS

Chapter 1:

[Introduction](#)

## Chapter 2:

### Conclusions

## Chapter 3:

### References

#### Abstract

The CIA and FBI are involved in a microwave torture program against thousands of U.S. Citizens, that are called Targeted Individuals. This illegal program was developed out the CIA's MK-Ultra project. Here is a list of some of the credible sources that can confirm these attacks and the technologies that are being used:

Dr Collin Ross, MD and Psychiatrist, author of "The CIA Doctors"

Dr Daniel Lebowitz, MD; Senate Committee presentation 2014

Dr John Hall, MD, author of "Satellite Terrorism in America"

Dr Terence Robertson, MD

Dr Katherine Horton, Oxford scientist

Dr Barrie Trower, Microwave scientist

Dr Nicholas Begich, scientist

Dr Doug Rokke, Government scientist and Army officer

Dr Paul Batcho, former Los Alamos scientist

Dr Corkin Cherubini, author

Dr Matthew Aaron, scientist

Dr Sean Andrew, scientist

William Binney, NSA veteran

Kirk Wiebe, NSA veteran

Karen Stewart, NSA analyst

Carl Clark, former CIA operative

Mark Phillips, CIA veteran

John DeCamp, Army intelligence officer

Kevin Shipp, former CIA agent

This short ebook focuses on the cell tower technologies that are being used to remotely attack people all over the world. The magnetron devices that are used to generate the attack frequencies are small enough to fit inside an enclosure box, but the supporting systems can be large and obvious. The latest technology uses Digital Beam-forming to enhance the targeting and number of attacks, each second. Some of the 5G technology companies are Ericsson, Qualcomm, Nokia, NEC, and Fujitsu, to name a few. There are three primary manufacturers of microwave magnetrons in the United States – National, Hitachi, and Toshiba.

The National Electronics company is the largest. We can learn and deduce much from the National catalog of microwave magnetrons. There are three frequency ranges that are generally used for heating water molecules - 915 MHz, 2450 MHz, and 5890 Mhz. It appears that the designs are using off the shelf hardware, that is modified to operate at a slightly different frequency. Magnetrons below 3000 watts can be air cooled, but anything larger, requires water cooling to operate continuously (CW). Pulsed microwaves can be air cooled up to about 30kW. Many of the high-power systems are designed to operate at 896 – 925 Mhz, and around 2440 – 2480 Mhz. These require a large cabinet enclosure that sits on the ground. High-powered systems are typically 30kW to 100kW. A variation of this design is likely what is being used on the cell towers to attack people. Look for the white box enclosures mounted on a cell tower – particularly those that have cooling vents on the sides. An electrical junction enclosure box, would never have vent holes on the side, because it is designed to keep all water out. An infrared camera can be used to identify which boxes have a magnetron inside.

This ebook also identifies some of the executives, in my opinion, that know their company and assets, are being used against Targeted Individuals. Name them and shame them. This includes AT&T, Crown Castle, American Towers, and others.

## Introduction

The microwave attacks on Targeted Individuals come from 5 main sources:

- 1) Cell Towers
- 2) Satellites
- 3) Drones
- 4) Portable devices
- 5) Smart meter systems using household wires

In general, we can say that, if the signal is coming from directly overhead, it is probably a satellite. (See my ebook, “How to Identify Microwave Satellites”) Such targeting is usually reserved for “high-value” persons, because it is very expensive to operate the satellites. Satellites can only track a certain number of people, so eventually they will run out of capacity. Although tracking is generally done by satellites and the precise coordinates are relayed.

If a signal is coming from approx. 45 degree angle above you, it is probably a drone. Note that the Army recently ordered 30,000 new drones. Also note, there is no war zone on the planet that could contain 30,000 drones – they would crash into each other. It is clear, these drones were purchased to attack private citizens over a large area, not military targets.

If a signal is coming at a person horizontally, it is likely coming from a cell tower. Although, it could be coming from a portable unit at a neighbor's house, be very certain before you assume this. That is part of the setup from the government criminals, and you may end up looking foolish. They want you to think it is a neighbor. Most of the time, it is a cell tower, and you can look these up on a map. The focused beam signal from a cell tower at 100,000 watts

can easily go thru your neighbor's walls or buildings, before it gets to you. Don't fall for this setup. Digital Beam-forming can also be used to target many people from a single antenna. With the new 5G technology, it is possible to hit thousands of people each second from a single antenna. This is the real reason that the Deep State wants the 5G technology. Subliminal messaging can be directed at many people from one antenna.

If you have a horizontal signal, try to triangulate to determine its source. This means going to opposite sides of your house or apartment and getting the direct line of the signal. If you have done this accurately, the two lines will intersect at the source. Draw an accurate map and mark the lines. Don't assume it is your neighbor – that is what the government criminals want.

Here are three cell tower maps:

[AntennaSearch.com](http://AntennaSearch.com)

[CellReception.com/towers](http://CellReception.com/towers)

[OpenSignal.com](http://OpenSignal.com)

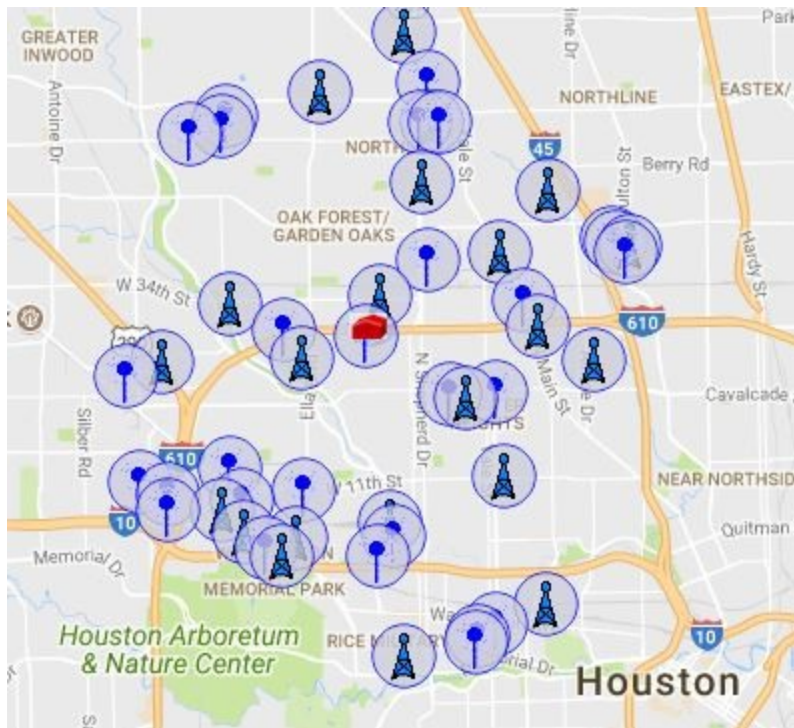


Figure. 1. Typical Cell Tower location map (AntennaSearch.com).

This short ebook will focus on the cell towers. A typical cell tower has some common

elements that can be identified. From the figure below, we can see that the large flat panel antennas are used for many cell phones in the United States. They cannot be used for focused microwave beams due to way they emit frequencies over a large area.

Some of the white boxes (approx 12" x 18" x 24") are electrical enclosures that basically contain power and signal wires. However, some of these white boxes have vent holes. This is the identifying feature that makes it a possible enclosure to hide the magnetron device, which gets very hot when it operates. For the high-powered magnetrons, they must be water cooled – which is done inside the cabinet on the ground, and also where it has its power source. These magnetrons are in the range of 30kW to 100kW (that means 30,000 watts to 100,000 watts). They use a lot of electricity and they get hot. An infrared camera can detect which boxes are getting hot, or simply look for the different thermal signatures. I have been told by some TI's that the signal can come from the ground, around the tower. If this is the case, then the equipment may be hidden in a small building on the ground.

If you suspect a cell tower, try to find the manufacturer name and model number on the large electrical boxes on the ground. This will be like National, Toshiba, or Hitachi. Caution: these large enclosures that sit on the ground have high voltage wires inside. Unless you are an electrician, it can be dangerous. Using a drone to get closer pictures of the equipment is also a possible idea.

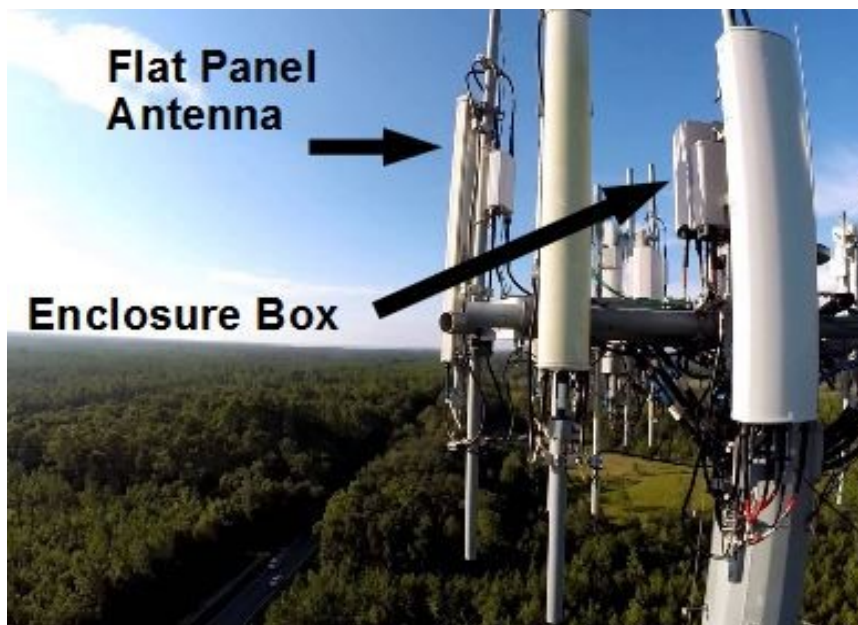


Figure 2. The flat panel antenna is used for cell phone signals. These antennas can also be used with “Digital Beam-forming.” Also, pay attention to the white enclosure boxes. Look for enclosure boxes with air vents. Electrical enclosures do not have vents, because they need to be weatherproof and sealed. Some of these enclosures might be attached to the side of the pole, lower down on the tower. Also, these boxes will not have any wires connecting to the panel antennas, although they might be located close to a panel antenna. An infrared

camera can help to identify which boxes may have a magnetron inside, because they get very hot when they are turned on. It may be possible to hide the magnetron inside one of the larger panel antennas, and this would again, show up with an infrared camera.



Figure 3. Note the box enclosure with vents in the center of this image. This is an AT&T equipment tower, owned by Crown Castle.



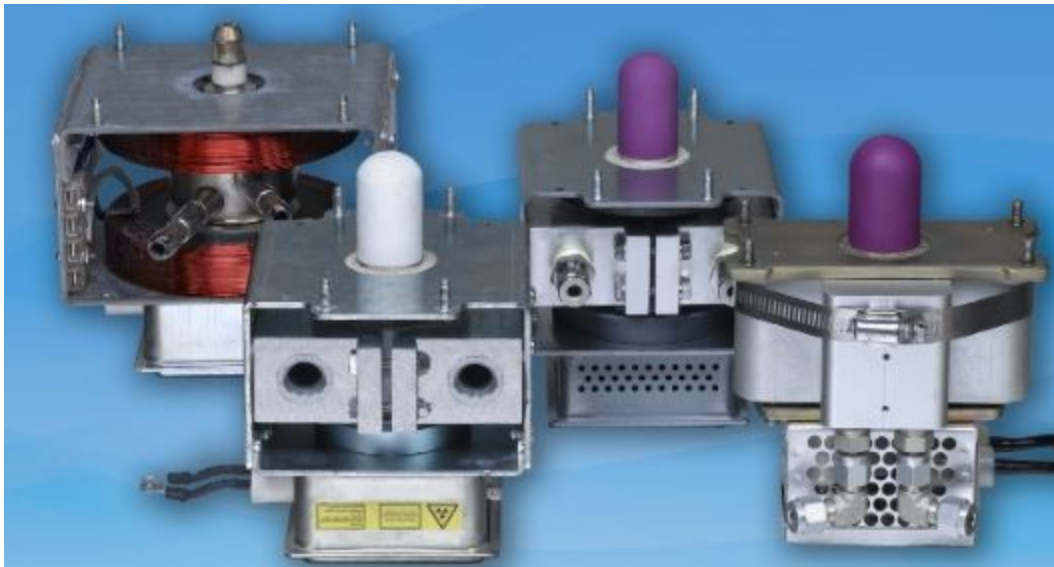


Figure 4. Several magnetrons. Small but potent. These are all water-cooled. They each use about 20,000 volts and 100 amps of current to operate.

#### Electrical Characteristics

Frequency:	915MHz $\pm$ 10MHz 896MHz & 922MHz available upon request
Generator Output Power:	
100kW option <sup>1</sup> :	30kW-100kW min. user adjustable
75kW option <sup>1</sup> :	10kW-75kW min. user adjustable
30kW option <sup>1</sup> :	5kW-30kW min. user adjustable
Duty:	Continuous Wave (CW)
Reflected Power:	Capable of withstanding 100% max. of forward output power <sup>2</sup>
Power Supply Type:	Inductive
Line Frequency Options:	50/60 Hz
Line Voltage Options <sup>3</sup> :	380 VAC 400 VAC 480 VAC
Generator Efficiency:	70%

#### Mechanical Characteristics

Generator Enclosure:	IP54, NEMA 3, painted steel cabinet
Maximum Dimensions:	60"W x 83"H x 46"D (includes all external protrusions)
Weight:	3,800 lb. max (liquid filled)
Cooling:	Liquid Cooled

#### Monitor & Control

Remote Interface:	Ethernet & Discrete
Interface:	Local or remote (w/ customer supplied interface)
Local Interface:	Horner Programmable Logic Controller (PLC) touch screen mounted on enclosure door
Touch Screen Status:	Warm up / Ready / Cooldown / Off Microwave On Power Set Point Forward Power Filament / Anode Current

Figure 5. Information from a manufacturer's catalog. Note the frequency range, about 896Mhz to 925 Mhz, and the size of the cabinet – 60" x 83"x 46". The optimal frequency for heating water molecules is 915 MHz. The large frequency range brings up an interesting question – Why would someone purchase a microwave system that was not set at the optimal



frequency? Clearly it is being used for something else. These systems are designed to operate at only one frequency, i.e. 896 MHz or 922 MHz (“available on request”), and the power output can be remotely controlled. So, the power can be turned up or down, and also pointed at a specific target. The GPS coordinates are obtained via satellite, and then the magnetron is pointed at the target within 1 centimeter. It is accurate. For a discussion on how the satellites can track someone, please read my free ebook, “How to Identify Microwave Satellites.” It is also possible that the 4G cell towers are using Digital Beam-forming, which allows them to attack hundreds of people each second, from a single antenna.

With the new 5G technology and Digital Beam-forming, it is possible to attack thousands of people, each second, from a single antenna. This is the real reason that the Deep State is promoting 5G technology – so they can track, attack, and send subliminal messages to thousands of people, from a single antenna.

There is also standard microwave equipment, from many manufacturers, that operates around 5800 MHz. The problem with this equipment is – it requires much more power and electricity to operate, because the atmosphere absorbs the frequency as the signal goes higher. It is possible they could use this equipment, but more likely they would use the systems with lower operational costs. The portable units seem to use frequencies around 2450 MHz – which means they are altered from a standard microwave oven. I have recently had two TI's - provide documented evidence at 2443 Mhz and 2480 Mhz. These units are probably pulsed, air-cooled units, which means their power and range are limited. The high-powered units at 896 – 925 MHz, water-cooled, can probably travel for several miles.

So there are 3 different frequency ranges that are likely being used, because they are “off-the-shelf” components. Approximately - 915 MHz, 2450 MHz, and 5800 MHz. And these components are altered so they emit a non-standard frequency, otherwise the moisture in the atmosphere would absorb the energy of the focused beam and it will not travel very far. Note that these frequencies are very different from a cell phone signal. When a maintenance crew works on a cell tower, they can check the frequencies, especially if there is a problem. They are the first ones to know that something is unusual, and that the tower is emitting non-standard frequencies. They also notice that there is equipment on the tower that is not connected to the panel antennas. That information gets reported and the executives know about it.

The information I am providing here, makes reasonable engineering assumptions. I cannot rule out the possibility that these government criminals are using something different. In any case, the information provided here, is a starting point for other researchers to continue the effort. Up to about 30kW of power, a signal can travel a several miles, and that is about the limit for a air-cooled magnetron. To get more distance, the government criminals can use water-cooled magnetrons, but that also makes them vulnerable. Look for a water tube coming down the tower – that could indicate that a water-cooled magnetron is being used. If this is the case, cut the water tube and the magnetron will overheat and fail. CAUTION: Be certain that you know the difference between a water tube – about 3/8” diameter, and an electrical wire. You can be electrocuted.

One way to get the maintenance technicians to show up – cut some of the power wires.

WARNING: You can be injured or killed if you don't know what you are doing. Keep in mind they may have security cameras on the tower. The wires can also be overheated by using a magnifying glass, or a solar reflector. When you see a maintenance technician – ask questions. Get his license plate, and take pictures. The maintenance technicians may be part of the problem – they probably know about the magnetron equipment and they know it isn't used for phone calls. Anyone on the tower can open the enclosure boxes and see that a magnetron is inside. They know about it.

I have not discussed the precision pointing mechanism, which would be required to hit a target, because I have not seen the inside of the enclosure box. The tracking is usually done via satellite, as described in my previous ebook, "How to Identify Microwave Satellites." The GPS signal can provide longitude, latitude, and elevation to within about 1 centimeter. The reason the technology is so precise, has to do with very accurate clocks in the satellite, that can time a reflected signal, so they know the exact distance to the top of your head. Note that satellites can accurately track a position on the ground within one centimeter. (see References 7, 8, 9)

A good signal analyzer and an infrared camera is the best equipment to start your research. Caution: The government criminals will try to disable your equipment. Only turn it on when you need to take measurements and then quickly shut it off by removing the battery. Also, keep a backup & safe copy of the firmware that operates your equipment.

What does the FCC table informs us about these frequencies?

894-1400 MHz (UHF)		Page 31
United States Table		FCC Rule Part(s)
Federal Table	Non-Federal Table	
890-902	(See previous page)	
	894-896 AERONAUTICAL MOBILE US116 US268	Public Mobile (22)
	896-901 FIXED LAND MOBILE US116 US268	Private Land Mobile (90)
	901-902 FIXED MOBILE US116 US268	Personal Communications (24)
US116 US268 G2	US116 US268	
902-928 RADIOLOCATION G59	902-928	ISM Equipment (18) Private Land Mobile (90) Amateur Radio (97)
5.150 US218 US267 US275 G11	5.150 US218 US267 US275	

Figure 6. 896 – 925 MHz

2417-2450 Radiolocation G2 5.150	2417-2450 Amateur 5.150 5.282	
2450-2483.5 5.150 US41	2450-2483.5 FIXED MOBILE Radiolocation 5.150 US41	ISM Equipment (18) TV Auxiliary Broadcasting (74F) Private Land Mobile (90) Fixed Microwave (101)

Figure 7. 2443 – 2480 MHz

2483.5-3500 MHz (UHF/SHF)		United States Table		FCC Rule Part(s)
		Federal Table	Non-Federal Table	
o-Earth)	TELLITE	2483.5-2500 MOBILE-SATELLITE (space-to-Earth) US319 US380 US391 RADIODETERMINATION-SATELLITE (space-to-Earth) 5.398	2483.5-2495 MOBILE-SATELLITE (space-to-Earth) US380 RADIODETERMINATION-SATELLITE (space-to-Earth) 5.398	ISM Equipment (18) Satellite Communications (25)
		5.150 5.402 US41	5.150 5.402 US41 US319 NG147 2495-2500 FIXED MOBILE except aeronautical mobile MOBILE-SATELLITE (space-to-Earth) US380 RADIODETERMINATION-SATELLITE (space-to-Earth) 5.398 5.150 5.402 US41 US319 US391 NG147	ISM Equipment (18) Satellite Communications (25) Wireless Communications (27)

Figure 8. 2483 MHz

5650-5925 RADIOLOCATION G2	5650-5830 Amateur	RF Devices (15) ISM Equipment (18) Amateur Radio (97)
	5.150 5.282 5830-5850 Amateur Amateur-satellite (space-to-Earth)	
	5.150	



	5850-5925 FIXED-SATELLITE (Earth-to-space) US245 MOBILE NG160 Amateur	ISM Equipment (18) Private Land Mobile (90) Personal Radio (95) Amateur Radio (97)
5.150 US245	5.150	

Figure 9. 5800 MHz



Figure 10. Typical cabinet enclosure for the power system – it sits on the ground and has the water-cooling equipment and power controls inside. Approximate dimensions, 60”wide x 83” tall x 46”deep. Note that a cabinet on the ground does not necessarily mean it is being used against Targeted Individuals. There are also cabinet enclosures for the cell phone antennas – flat panel antennas, that are high-powered. A technician that is conducting maintenance would know the difference. If you see one working on a cell tower – ask them.

Google maps is a good resource for identifying some of these towers. You can also use the history timeline to see the same location a few years ago, and note which equipment has been added recently.

### Electricity Usage

These microwave components are power hungry. They are usually operated in pulse mode, and when turned on, use about 100 amps and about 20,000 volts. Those electrical spikes would look like this on a chart:

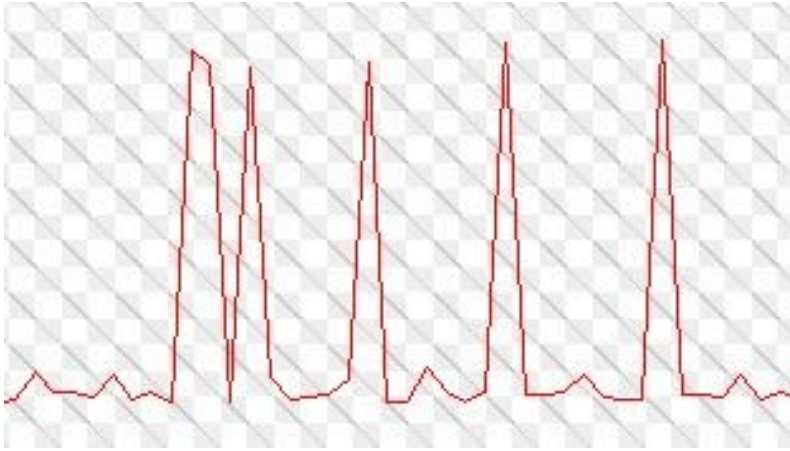


Figure 11. The magnetron is operated in pulse mode, which causes large spikes in the electrical usage. Anyone looking at the electrical use for the tower would notice this. A clear sign that a magnetron is being used on the tower.

Anyone that looks at the smart meter or electric power usage for the tower, will see something obvious - cell phone antennas do not usually have power spikes like this. Moreover, the electric bill is ridiculously large for a tower. Ten thousand dollars per month or more.

So anyone that can look at the electric bill for these towers, can tell if they have magnetrons operating. Anyone with an infrared camera, can identify the magnetrons on the tower.

Let's examine the big picture for this system of cell towers and microwave attack components. I live in the 4th largest city in the United States. Within 3 miles, there are approximately 47 towers, and a population of about 150,000 people that live or work in this area. It appears that the number of magnetrons on a tower varies from zero to 6, so we will assume an average of 3, just for rough numbers. That means there are about 150 magnetrons that could attack 150 people. That is about 1/10 of 1% of the population in a large city. That certainly does not indicate that they can control the population.

With the use of Digital Beam-forming, the numbers change dramatically. Using 5G technology, the Deep State can target and attack thousands of people using a single antenna.

Who owns the cell towers?



# Top 100 Tower Companies in the U.S.

Total does not include foreign-owned tower portfolios. In some cases the tower company might not own the structure, but has lease rights and the ability to acquire the towers after a set period of time. Totals do not include DAS and small cells.

Rank ▲	Company †	Tower Count †
1	<a href="#">Crown Castle</a>	40,039
2	<a href="#">American Tower</a>	39,989
3	<a href="#">SBA Communications</a>	14,873
4	<a href="#">United States Cellular Co.</a>	4,207
5	<a href="#">Vertical Bridge</a>	3,198
6	<a href="#">Insite Towers</a>	1,100
7	<a href="#">BNSF Railroad</a>	941
8	<a href="#">Time Warner</a>	653
9	<a href="#">Diamond Communications</a>	637
10	<a href="#">Phoenix Tower International</a>	620

Figure 12. Largest cell tower companies

There are three main companies that own and lease cell phone towers. They are:

CrownCastle.com  
AmericanTower.com  
SBAsite.com

In my opinion, most if not all, of these executives know that their cell towers are being used against Targeted Individuals. They would know what equipment has been installed on their

property and they know who installed it. Name them and shame them.

https://www.corporationwiki.com/Texas/Houston/crown-castle-usa-inc-6357081.aspx Search

Overview **13 Key People** 3 Locations 5 Filings Contribute

## Key People Who own Crown Castle USA, Inc. Excel

**Name**

Jay Brown <b>70</b> ~ Background Report ~	<b>President</b> <b>Chief Executive Officer</b> <b>Director</b> <b>Chief Executive Officer</b> CFO Treasurer Vice President Svp Chief Financial Officer
Donald J. Reid <b>61</b> ~ Background Report ~	<b>Secretary</b> <b>Director</b>
Robert Ackerman <b>1</b> ~ Background Report ~	<b>President</b>
Daniel K. Schlanger <b>40</b> ~ Background Report ~	<b>Treasurer</b> <b>Director</b> <b>Chief Financial Officer</b> <b>Svp</b>
Lynn Howell <b>36</b> ~ Background Report ~	<b>Treasurer</b> <b>Secretary</b>
W. Benjamin Moreland <b>78</b> ~ Background Report ~	<b>Executive</b> <b>President</b> <b>CEO</b> <b>CFO</b> <b>Director</b> <b>Executive Vp</b> <b>Vice President</b> <b>Chief Executive Officer</b>
E. Blake Hawk <b>72</b> ~ Background Report ~	<b>Executive</b> <b>Director</b> <b>Executive Vp</b> <b>Vice President</b> <b>Executive Vice Presi</b>
Son Nguyen <b>1</b> ~ Background Report ~	<b>Treasurer</b>

« 1 2 » Showing 8 records out of 13

10:44 AM 11/2/2017

Figure 13. Crown Castle executives. (corporationwiki.com) The corporate headquarters are

1220 Augusta Drive in Houston, Texas.



### **Jay A. Brown**

President and Chief Executive Officer

Jay A. Brown was appointed President and Chief Executive Officer of Crown Castle in June 2016. Mr. Brown was Crown Castle's Chief Financial Officer from May 2014 to May 2016. Prior to that, Mr. Brown served as Chief Financial Officer from May 2004. Since joining Crown Castle, Mr. Brown has held a number of positions in corporate development and operations. Prior to joining Crown Castle, Mr. Brown worked for several companies and Arthur Andersen LLP. Mr. Brown



### **Robert C. Ackerman**

Senior Vice President and Chief Operating Officer - Towers and Small Cells

Robert C. Ackerman was appointed Senior Vice President and Chief Operating Officer - Towers and Small Cells in June 2016. He is responsible for the management of the towers and small cells business groups. Prior to this appointment, he served as Senior Vice President and Chief Operating Officer of the towers and small cells business. Mr. Ackerman joined Crown Castle in June 2016. He has extensive experience in the telecom industry. P



### **W. Benjamin Moreland**

Executive Vice Chairman

W. Benjamin (Ben) Moreland was appointed Executive Vice Chairman of Crown Castle in June 2016. Prior to his appointment, Mr. Moreland was President and CEO from July 2008 until June 2016. He joined Crown Castle in June 2008. He worked for Manhattan Bank, primarily in corporate and investment banking. Mr. Moreland is a former board member of WIA-The Wireless Infrastructure Association.

Figure 14. In my opinion, these three men know that Crown Castle property is being used against Targeted Individuals. Jay A. Brown, Robert C. Ackerman, and W. Benjamin Moreland. There are other executives as well.

**Jay A Brown**

2306 Autumn Oaks TRL Arlington, TX 76001  
(817) 652-4491

[View full profile »](#)

---

**Jay A Brown**

7715 San Bruno ST Beaumont, TX 77708  
(409) 898-4774

[View full profile »](#)

---

**Jay A Brown**

4900 Rose Quartz CT Killeen, TX 76543  
(254) 833-5224

Figure 15. Jay A. Brown on Zabasearch.com

Overview

24  
Key People

2  
Locations

4  
Filings

Contribute

# Key People

Who own American Tower Management, LLC

Excel

## Name

 James D. Taiclet <b>74</b> ~ Background Report ~	<b>Chairman</b>	<b>President</b>	<b>Chief Executive Officer</b>		
 William H. Hess <b>57</b> ~ Background Report ~	<b>President</b>	<b>Executive Vice Presi</b>	<b>International Operat</b>	<b>L</b>	<b>Secretary</b>
 Amit Sharma <b>32</b> ~ Background Report ~	<b>President</b>	<b>Asia</b>	<b>Executive Vice Presi</b>		
 Steven C. Marshall <b>33</b> ~ Background Report ~	<b>President</b>	<b>Executive Vice Presi</b>	<b>U S Tower Division</b>		
 Jeffrey Williams <b>28</b> ~ Background Report ~	<b>Treasurer</b>	<b>Director</b>			
 Leah Steams <b>13</b> ~ Background Report ~	<b>Treasurer</b>	<b>Investor Relations</b>	<b>Senior Vice Presiden</b>		
 Tammy Furlong <b>28</b> ~ Background Report ~	<b>Vice President</b>	<b>Controller</b>	<b>Asst Corporate</b>		
 Mneesha D. Nahata <b>28</b> ~ Background Report ~	<b>Vice President</b>	<b>Assistant Secretary</b>	<b>Legal</b>		

« 1 2 3 » Showing 8 records out of 24

Figure 16. American Tower executives (corporationwiki.com)



## James D. Taiclet, Jr.

James Taiclet is the Chairman, President and Chief Executive of American Tower Corporation, a leading global developer, owner and operator of telecommunications real estate headquartered in Boston, Massachusetts. Prior to joining American Tower, Mr. Taiclet served as President of Honeywell Aerospace Services, a unit of Honeywell International, and prior to that as Vice President, Engine Services at Pratt & Whitney, a unit of United Technologies Corporation.



## Ed DiSanto

Edmund DiSanto is our Executive Vice President, Chief Administrative Officer, General Counsel and Secretary. Prior to joining us in April 2007, Mr. DiSanto was with Pratt & Whitney, a unit of United Technologies Corporation. Mr. DiSanto started with United Technologies in 1989, where he first served as Assistant General Counsel of its Carrier subsidiary, then corporate Executive Assistant to the Chairman and Chief Executive Officer of United Technologies. From 1997, he held various legal and business roles at its Pratt & Whitney unit, including Deputy



## Steven Marshall

Steven C. Marshall is our Executive Vice President and President, U.S. Tower Division. Mr. Marshall served as our Executive Vice President, International Business Development from November 2007 through March 2009, at which time he was appointed to his current position. Prior to joining us, Mr. Marshall was with National Grid Plc, where he served in a number of leadership and business development positions since 1997. Between 2003 and 2007, Mr. Marshall was Chief Executive Officer, National Grid Wireless, where he led National Grid's wireless tower

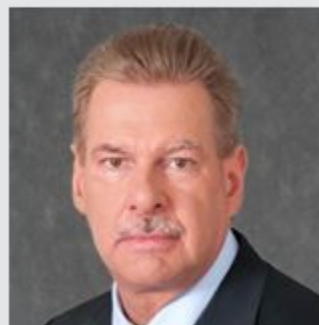


Figure 17. In my opinion, these three men know that American Tower's cell towers are being used against Targeted Individuals. James D. Taiclet, Jr, Edmund DiSanto, and Steven C. Marshall. There are other executives as well.

**Public Information** Results Summary:

**James D Taiclet**

5 Colgate RD Wellesley, MA 02482  
(781) 235-7041

[View full profile »](#)

Figure 13. James D. Taiclet on zabasearch.com

**AT&T Inc.**

208 South Akard Street  
Dallas, TX 75202  
United States  
[210-821-4105](tel:210-821-4105)  
<http://www.att.com>

Sector: **Technology**  
Industry: **Telecom Services - Domestic**  
Full Time Employees: **260,480**

**Key Executives**

Name	Title	Pay	Exercised	Age
Mr. Randall L. Stephenson	Chairman, CEO & Pres	8.9M	445.29k	56
Mr. John Joseph Stephens	Sr. EVP & CFO	3.3M	82.47k	58
Mr. John M. Donovan	Chief Exec. Officer of AT&T Communications	N/A	N/A	57
Mr. John T. Stankey	Sr. Exec. VP of AT&T/Time Warner Merger Integration Planning	3.15M	10.69k	54
Mr. Michael J. Viola	Sr. VP of Investor Relations	N/A	N/A	63

Figure 18. In my opinion, the executive of AT&T, know that their equipment is being used against Targeted Individuals. Name them and shame them – this company is among the worst. I feel pure disgust for these AT&T executives – they will do anything for the CIA or NSA. Randall L. Stephenson, John M. Donovan, and John Joseph Stephens. Recall the lawsuit based on AT&T technician Mark Klein who provided details about the level of corruption and collusion between the NSA and AT&T.



Figure 19. Randall Stephenson. In my opinion, this man is fully aware that cell towers of AT&T are being used in the Target Individuals program.

**Randall L. Stephenson**

5404 Walnut Hill LN Dallas, TX 75229  
(210) 351-5401

[View full profile »](#)

---

**Randall L. Stephenson**

7324 Deville DR North Richland Hills, TX 76180  
(817) 581-3299

Figure 20. Randall L. Stephenson on zabasearch.com

Conclusions

This short ebook presents some of the technology that is being used against Targeted Individuals from cell towers. The CIA runs and directs this program, with help from the FBI.

The information provided here, is a starting point for other researchers to continue the effort. I cannot and do not pretend that it is comprehensive, as this technology has been developed over decades. Most of the subliminal messaging comes from cell towers, in my opinion.

Any of the frequencies coming from a cell tower are good indicators that a magnetron and/or Digital Beam-forming is being used to Target Individuals: 896 MHz, 922 MHz, 2443 MHz,

2480 MHz, 5800 MHz Note that these frequencies are slightly different than the optimal frequency for heating water molecules.

One of the best ways to stop these illegal attacks, is to inform people about them – Name them and shame them. If we can bring down the Deep State, the attacks will stop. Remove the funding from the CIA, Rockefellers and Rothschilds and it will shut down the Deep State - see my free ebook “Rockefeller & Rothschild Dirty Money on the London Stock Exchange.” In my opinion, this has already begun. I would hope that the people involved with the Targeting program will face charges for war crimes, just like the Nazi's after WWII.

This document is a living document. The author reserves the right to make corrections and changes.

## References

1. BiggerThanSnowden.com
2. RLighthouse.com
3. Richard Lighthouse, “Rockefeller & Rothschild Dirty Money on the London Stock Exchange” 2016, smashwords.com and RLighthouse.com; ISBN: 9781370630073.
4. Richard Lighthouse, “More Hacking from the Nazi Stasi Academy (NSA)”, 2017, smashwords.com and RLighthouse.com; ISBN: 9781370749720.
5. Richard Lighthouse, “Cell Phone Hacking & the Nazi Stasi Academy” 2016, smashwords.com and RLighthouse.com; ISBN: 9781370681594.
6. Richard Lighthouse, “Satellites and Weapons of the Air Force Space Command” 2018, smashwords.com and RLighthouse.com.

References that show the precision in pointing and tracking with GPS – down to one centimeter:

7. Bisnath, S., and Y. Gao, “Innovation: Precise Point Positioning,” *GPS World*, April 2009
8. Booth, J., and R. Snow, “Help from Above, Flight Testing Two Alternatives to Ground-Based DGPS,” *Inside GNSS*, pp. 26-35, September 2010
9. Cai, C., and Y. Gao, “Precise Point Positioning Using Combined GPS and GLONASS Observations,” Department of Geomatics Engineering, University of Calgary, Alberta, Canada, *Journal of Global Positioning Systems*, Vol.6, No.1: 13-22, 2007

About: The author holds a Master of Science (M.Sc.) degree in Mechanical Engineering from Stanford University and has previously worked for NASA.

Contact:

Rlighthouse -at -- protonmail.com

Funding:

This research was generously supported with a grant from the Foundation Opposed to Academic Puffery (FOAP).

## APPENDIX

I am a proud whistleblower – see my ebooks about the criminal acts of the CIA and FBI. Readers are advised that the NSA and/or CIA may be blocking or restricting access to some of my ebooks, especially outside the United States. Readers are further advised that digital tracking tags may have been placed in my ebooks. Note how slowly the jpg's load into the ebook when viewing, or there may be transparent objects placed inside the document (This is the government criminal's latest ploy). The content of some ebooks may have been altered – still trying to monitor this. If you have tried to contact me, it is possible that emails and phone calls are being blocked.

Readers are advised to review the website [drjudywood.com](http://drjudywood.com) which provides compelling evidence about 9-11. [drjudywood.com/articles/DEW/StarWarsBeam4.html](http://drjudywood.com/articles/DEW/StarWarsBeam4.html) ..... Note Figure 63. Dr Wood spent many years researching this and filed suit against the US Government, along with Dr Morgan Reynolds. Jet fuel does not burn through concrete and steel. The cookie-cutter holes were made by a high-powered laser that rapidly ages material - and turned the concrete and steel into dust in seconds. Note Figure 38(a) here: [drjudywood.com/articles/DEW/StarWarsBeam3.html](http://drjudywood.com/articles/DEW/StarWarsBeam3.html) ...Watch the steel beams turn into dust while standing vertically. This laser operates at a harmonic of the blinking frequency - which causes rapid aging. Readers are also advised to see the movie "Sirius" by Dr Steven Greer, M.D. It is available for free on Netflix, where it is the #1 documentary, and to watch the youtube videos by the Honorable Paul Hellyer, former Canadian Minister of Defense. He has a book titled, "The Money Mafia."

Also, find my brief educational videos on youtube (Some have been blocked from the search engines).

For more than 6 years, this author has been stalked, harassed, and threatened by US Government agents from the CIA, FBI, and NSA - because of the content of these ebooks. My home has been broken into, repeatedly. In May 2014, my girlfriend was drugged and kidnapped from LaGuardia airport. She was unconscious more than 4 hours. This is not a joke. My computer, phone, and alarm system have been hacked, including those of my friends and family. It is truly sad and pathetic, these agencies have become criminal organizations. If something happens to me (disappearance, false criminal charges, sudden accident, etc. - my readers can be certain that the FBI and CIA were involved. See my related ebooks identifying the murders of Gary Webb, Michael Hastings, Phil Schneider, William Colby, Dr Eugene Mallove, Stan Meyers, and others. In my opinion, the Council on Foreign Relations (CFR) is behind these criminal acts; David Rockefeller was the CEO and Chairman for many years. The CIA is intimately involved with these criminal acts.



“The CIA and FBI are behind most, if not all terrorism.”  
- Ted Gunderson, former FBI Chief

For future reference, I would never deliberately do something to harm or hurt myself. This goes against my beliefs and against the teachings of Seth. This needs to be stated because the CIA and FBI have proven many times, they are willing to use “staged suicides” to solve their “problems”. Phil Schneider went public with his information on Secret Military Construction projects, after 8 of his co-workers were murdered during staged suicides. Then he was murdered. His videos are on youtube and other websites.

The screenshot shows a web browser window with the URL `/getISBN/757833`. The page title is "ISBN Assignment Results for Cell Towers and Targeted Individuals". A congratulatory message reads: "Congratulations! You have assigned an ISBN to your book Cell Towers and Targeted Individuals." Below this, a box contains the following information:

<b>ISBN:</b> 9781370905508
<b>Title:</b> Cell Towers and Targeted Individuals
<b>Author:</b> Richard Lighthouse
<b>Publisher:</b> Smashwords, Inc.

At the bottom of the page, there is a navigation bar with links for "Blog", "Smart Author Podcast", "Affiliates", "FAQ", "Support", "Privacy Statement", "Terms of Service", "Jobs", and "Sign Out". The footer includes the copyright notice: "Copyright © 2017 Smashwords, Inc. All rights reserved." The system tray at the bottom right shows the time as 5:18 AM on 11/7/2017.

Figure 21. ISBN for this ebook.

## Appendix 2

Other addresses from zabasearch



**W B Moreland** [Get the Dirt](#) [Che](#)  
9 Beebe LN  
Houston, TX 77024 (409) 737-4264 [C](#)  
[Background Check on W B Moreland](#)

Figure 22. Moreland on Zabasearch.com

**John M Donovan**  
517 Chestnut TRL Forney, TX 75126  
(615) 412-3988

[View full profile »](#)

---

**John M Donovan**  
5101 New Colony LOOP Rogers, TX 76569  
(254) 983-1001

[View full profile »](#)

---

**John M Donovan**  
6306 Norway RD Dallas, TX 75230  
(214) 378-7770

Figure 23. John Donovan on Zabasearch.com

**Edmund Disanto**

137 Sea AVE Quincy, MA 02169

(860) 521-6409

[View full profile »](#)

---

**Edmund F Disanto**

344 Pleasant ST Canton, MA 02021

(781) 828-5440

Figure 24. Edmund DiSanto on Zabasearch.com

**Robert C Ackerman**

9319 Knoll Crest LOOP #LO Austin, TX 78759

(512) 338-1480

[View full profile »](#)

---

**Robert C Ackerman**

1625 Collins AVE Wichita Falls, TX 76301

[View full profile »](#)

---

**Robert C Ackerman**

1403 Devonshire LN Wylie, TX 75098

(972) 495-0145

Figure 25. Robert C. Ackerman on Zabasearch.com

**John T Stankey** [Get the Dirt](#) [Check](#)  
309 E Hermosa DR  
San Antonio, TX 78212 (760) 341-1308 [C](#)  
[Background Check on John T Stankey](#)

Figure 26. John T. Stankey on Zabasearch.com

**Michael J Viola**  
4321 Edmondson AVE Dallas, TX 75205  
(208) 726-8541

[View full profile »](#)

---

**Michael J Viola**  
704 Vega LN Killeen, TX 76542

[View full profile »](#)

---

**Michael J Viola**  
1401 Storm CT E Bedford, TX 76022  
(817) 571-4309

[View full profile »](#)

---

**Michael J Viola**  
710 Morningside AVE Magnolia, TX 77353

Figure 27. Michael J. Viola on Zabasearch.com